

Medtronic

Extended™ Infusion Set and Extended™ Reservoir

Quick Reference Guide



Includes technology developed by **dreamed**
diabetes.ai

Medtronic and Medtronic logo are trademarks of Medtronic. ^{TM*} Third-party brands are trademarks of their respective owners. All other brands are trademarks of a Medtronic company.

Contents

- **Changing the Medtronic Extended Infusion Set and Extended Reservoir 7**

The Extended infusion set and the Extended reservoir can be used for up to seven days. In most cases, the infusion set and reservoir should be changed at the same time.

- **Disconnecting and Reconnecting the Extended Infusion Set 23**

- **Changing the Extended Reservoir Only 27**

The Extended reservoir can be used for up to seven days. If the reservoir runs out of insulin and the infusion set has not been used for seven full days, the New Reservoir Only option may be used to change the reservoir. The infusion set must still be replaced after seven days of use.

- **Changing the Extended Infusion Set Only 39**

The Extended infusion set can be used for up to seven days. If only the infusion set needs to be changed before seven full days of use, the New Set Only option may be used to change the infusion set. The Extended reservoir must still be replaced after seven days of use.

WARNING: The following warning applies to changing the reservoir and infusion set, changing the reservoir only, and changing the infusion set only.

Always confirm that the infusion set tubing is disconnected from the body before doing the following steps:

- placing the reservoir into the pump
- rewinding the pump
- loading the reservoir
- filling the infusion set tubing

Failing to disconnect the infusion set tubing from the body may result in an accidental infusion of insulin, and may cause hypoglycemia.

Changing the Medtronic Extended Infusion Set and Extended Reservoir



The Extended infusion set and the Extended reservoir can be used for up to seven days. In most cases, the infusion set and reservoir should be changed at the same time.


Note: The Extended infusion set and Extended reservoir can be used for up to seven days. To avoid wasting insulin, fill the reservoir with enough insulin to last until the next infusion set change.

START HERE

Follow these steps to change the infusion set and reservoir.

1



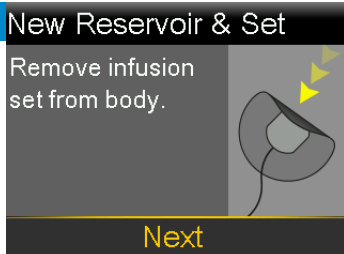
Wash hands with soap and water. On the pump, press  to go to the Menu screen.

2



Select , and then select **New Reservoir & Set**.

3

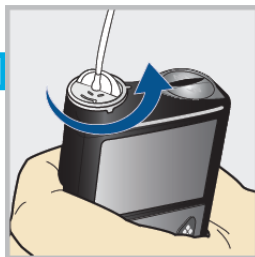


Remove the infusion set by loosening the adhesive and pulling the set away from the body. Select **Next**.

WARNING: Always confirm that the infusion set is disconnected from the body before rewinding the pump. Failing to disconnect the infusion set from the body may result in an accidental infusion of insulin, and may cause hypoglycemia.

4 New Reservoir & Set
 Remove reservoir from pump.
 Then select Rewind.

Rewind



Remove the used reservoir from the pump.

5 New Reservoir & Set
 Remove reservoir from pump.
 Then select Rewind.

Rewind

Select **Rewind**.
Do not connect the infusion set to the body.

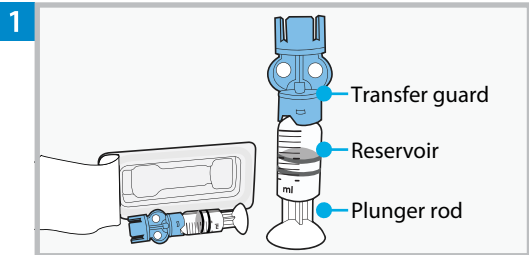


6 New Reservoir & Set
 1. Fill new reservoir.
 2. Connect new tubing to reservoir.
 DO NOT CONNECT TO BODY.

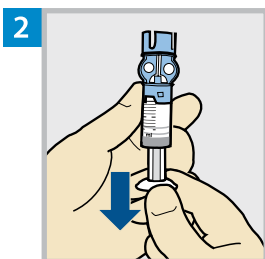
Next

Follow the next steps to fill the new reservoir with insulin and to connect the new infusion set tubing.
 Do not select **Next**.

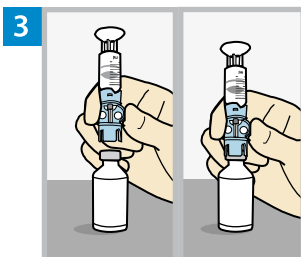
FILL THE RESERVOIR



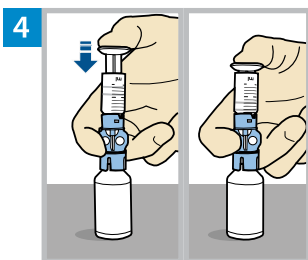
Remove the reservoir from the package. Make sure the insulin vial is at room temperature to reduce the risk of air bubbles.



Pull the plunger down to the amount of insulin needed.

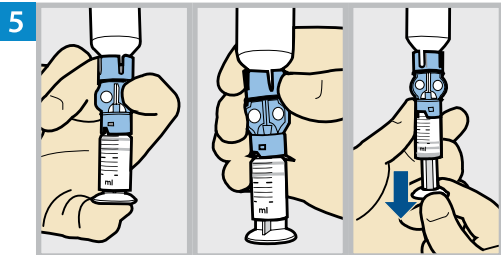
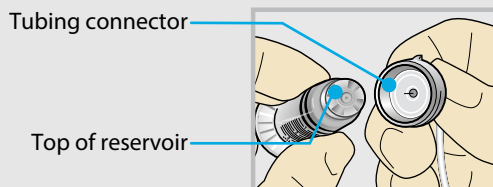


Wipe the top of the vial with alcohol. Place the vial on a sturdy, flat surface. Firmly press the transfer guard onto the vial.

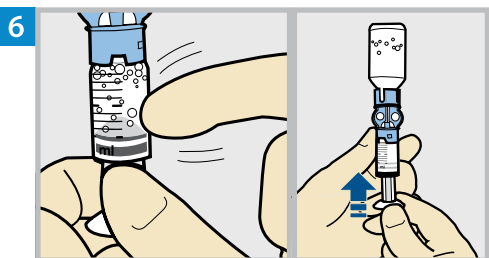


Push and hold the plunger down.

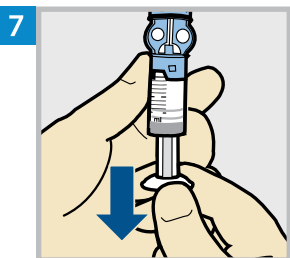
WARNING: Do not use the reservoir or infusion set if insulin or any liquid gets on the top of the reservoir or inside the tubing connector, as shown in the image. Insulin or any liquid can temporarily block the vents. This may result in the delivery of too little or too much insulin, which can cause hyperglycemia or hypoglycemia. If insulin or any liquid gets on the top of the reservoir or inside the tubing connector, start over with a new reservoir and infusion set.



Keeping a thumb on the plunger, flip the vial over so the vial is on top. Release the thumb and pull the plunger down to fill the reservoir with insulin.

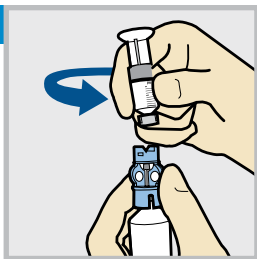


Tap the reservoir to move air bubbles to the top of the reservoir. Push the plunger up to move air into the vial.



Pull the plunger back down to allow the reservoir to fill with the amount of insulin needed.

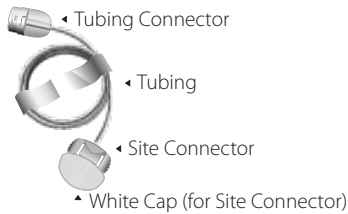
8



To avoid getting insulin on the top of the reservoir, **flip the vial over again so the reservoir is on top**. Hold the transfer guard and turn the reservoir counter-clockwise and remove the reservoir from the transfer guard.

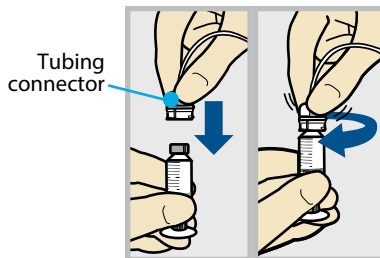
CONNECT THE INFUSION SET TO THE FILLED RESERVOIR

1 Extended Infusion Set



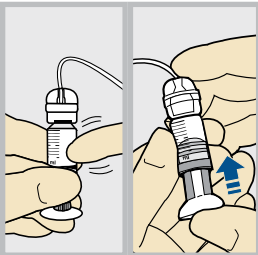
Remove the infusion set tubing from the package. Remove the paper that holds the tubing together and unwind the tubing.

2



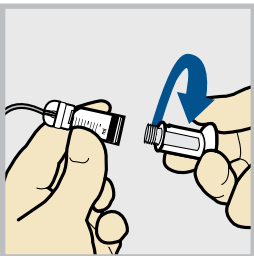
Gently push the tubing connector onto the reservoir. Turn the connector clockwise until it is locked into place.

3





Tap the reservoir to move any air bubbles to the top. Push the plunger slightly to move the bubbles into the tubing.

4



Twist the plunger counter-clockwise to loosen it and to remove it.

PLACE THE RESERVOIR INTO THE PUMP

Note: If the backlight turns off, press any button to turn the screen back on. If you see the Home screen with a red banner, press  to go to the menu screen, and then select . Go through the steps until you reach the screen shown below.

1 New Reservoir & Set

1. Fill new reservoir.
 2. Connect new tubing to reservoir.
- DO NOT CONNECT TO BODY.

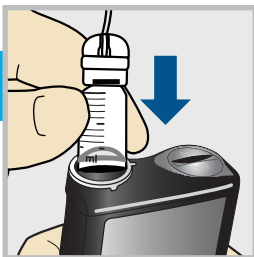
Next

Select **Next**.

2 New Reservoir & Set

3. Place reservoir into pump and lock.
- DO NOT CONNECT TO BODY.

Next

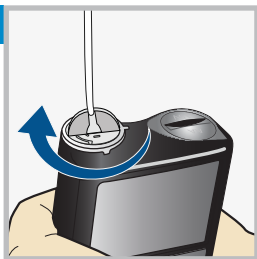


Place the reservoir into the pump.

Do not connect the infusion set to the body.

WARNING: Always confirm that the infusion set is disconnected from the body before placing the reservoir into the pump. Failing to disconnect the infusion set from the body may result in an accidental infusion of insulin, and may cause hypoglycemia.

3



New Reservoir & Set

3. Place reservoir into pump and lock.
- DO NOT CONNECT TO BODY.

Next

Turn the reservoir clockwise until the reservoir locks into place, and select **Next**.

LOAD THE RESERVOIR AND FILL THE TUBING


1 Load Reservoir

Select Load and hold until complete.
DO NOT
CONNECT TO
BODY.



Load

Next

Select **Load** and hold  until the checkmark appears on the screen. **Do not** connect the infusion set to the body.

2 Load Reservoir

Complete

DO NOT
CONNECT TO
BODY.



Load

Next

When the checkmark appears, select **Next**.

WARNING: Always confirm that the infusion set is disconnected from the body before loading the reservoir and filling the tubing. Failing to disconnect the infusion set from the body may result in an accidental infusion of insulin, and may cause hypoglycemia.

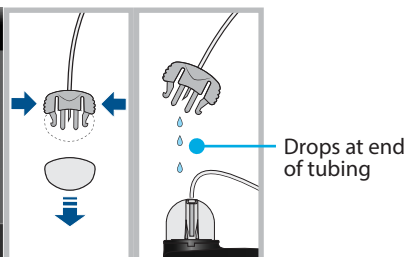
3 Fill Tubing

DO NOT CONNECT TO
BODY.
Hold Fill until drops appear.
Then select Next.


0.0_u

Fill

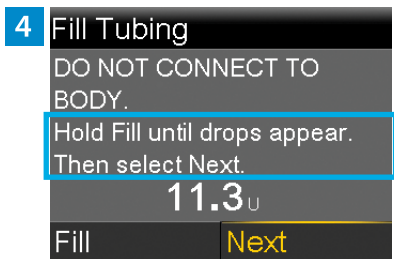
Next



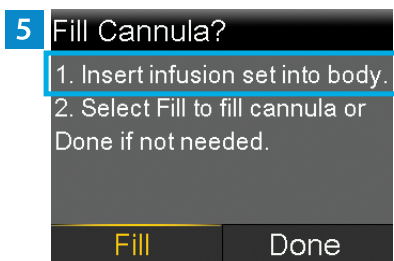
Remove the white cap from the site connector by squeezing the sides of the site connector then pulling the white cap off.

Select **Fill** and keep holding  until there are no air bubbles visible in the tubing, and there are drops at the end of the tubing.

Do not connect the infusion set to the body.



After drops appear, press  and select **Next**.



Follow the next steps to insert the infusion set before filling the cannula.

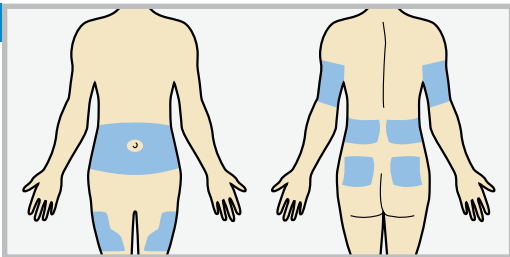
INSERT THE INFUSION SET

Extended Insertion Device

Top Button

- ◀ Disconnect Cover (for Cannula Housing)
- ◀ Insertion Device
- ◀ Raised Arrows Indicating Tubing Direction
- ◀ Cannula Housing
- ◀ Soft Cannula

1



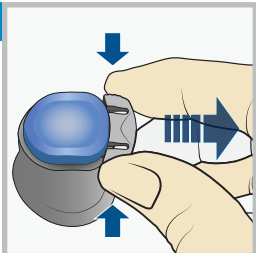
Choose an insertion site from the shaded areas. Clean the insertion site with alcohol or other antiseptic as directed by a healthcare professional.

2

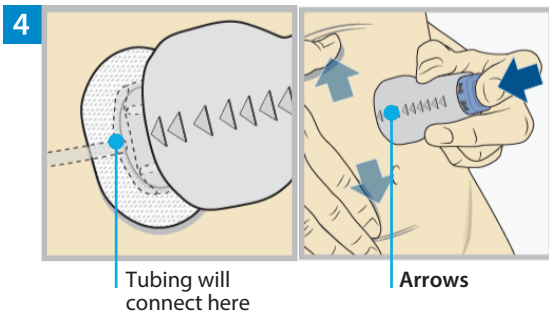


Remove the paper backing from the adhesive. Be careful not to touch the adhesive.

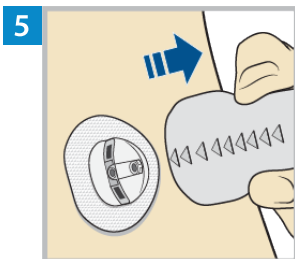
3



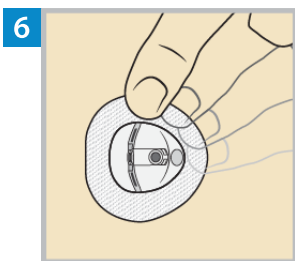
Remove the disconnect cover by gently squeezing the sides and pulling it away from the insertion device.



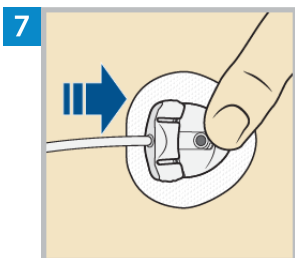
The raised arrows on the insertion device indicate the direction the tubing will run when it is connected. Stretch the skin until smooth. Place the insertion device in the desired location on your skin. Then press the top button completely down to insert the infusion set.



Carefully pull the insertion device straight away from the body.

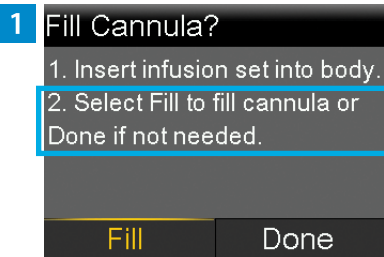


Press the adhesive against the skin all the way around the site. If the adhesive does not stick to the skin, start over with a new infusion set.



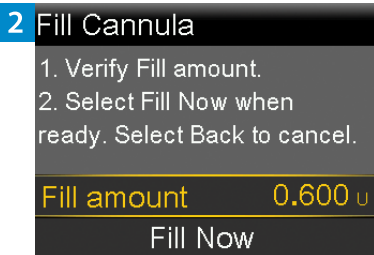
Hold the cannula housing with a finger, and insert the site connector straight into the cannula housing. There will be a click when the site connector is correctly inserted.

FILL THE CANNULA

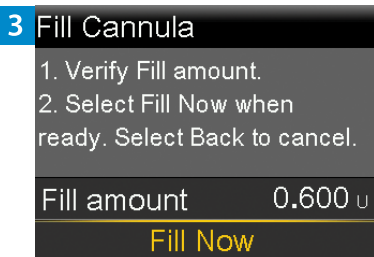


After the infusion set is inserted into the body, select **Fill**.

Note: Always verify that the amount shown in the **Fill amount** field is correct. The pump will remember the fill amount last used. Change the **Fill amount** if needed.



Select **Fill amount** and enter 0.600. Then press .



Select **Fill Now**.

The Home screen displays the insulin amount as insulin fills the cannula.



The reservoir and infusion set change is now complete.

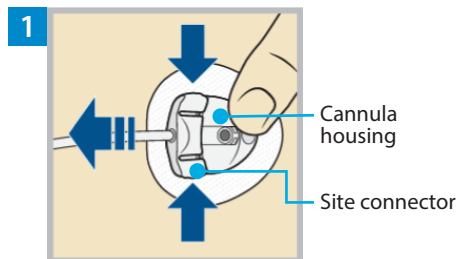
Always check blood glucose using a blood glucose meter one to three hours after changing the infusion set or reservoir.

Note: Remove the transfer guard from the vial. Dispose of the transfer guard, the used reservoir, all parts of the used infusion set and the insertion device in an appropriate sharps container and in accordance with local laws.

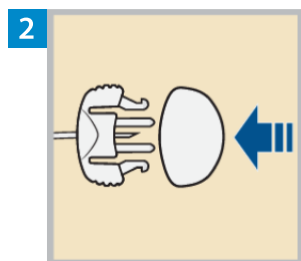
Disconnecting and Reconnecting the Extended Infusion Set

DISCONNECT THE INFUSION SET

Follow these steps to disconnect the infusion set. Do not remove the adhesive with the cannula housing from the body.



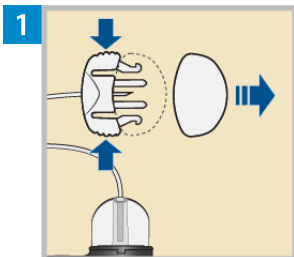
To disconnect, gently hold the cannula housing steady with a finger. Then squeeze the sides of the site connector and pull it out from the cannula housing.



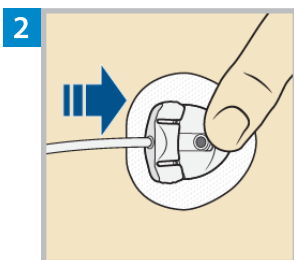
Put the white cap on the site connector.

RECONNECT THE INFUSION SET

Follow these steps to reconnect the infusion set.



Remove the white cap from the site connector by squeezing the sides of the site connector then pulling the white cap off. Check to make sure there is no air in the tubing. If there is air in the tubing, fill the tubing with insulin as instructed earlier in this document.



Use a finger to gently hold the cannula housing steady. Push the site connector into the cannula housing until there is a click.

Changing the Extended Reservoir Only



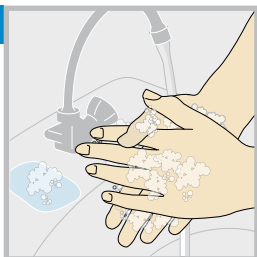
The Extended reservoir can be used for up to seven days. If the reservoir runs out of insulin and the infusion set has not been used for seven full days, the New Reservoir Only option may be used to change the reservoir. The infusion set must still be replaced after seven days of use.


Note: The Extended infusion set and Extended reservoir can be used for up to seven days. To avoid wasting insulin, fill the reservoir with enough insulin to last until the next infusion set change.

START HERE

Follow these steps to change the reservoir and keep the current infusion set.

1



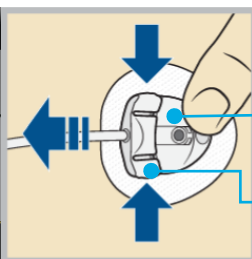
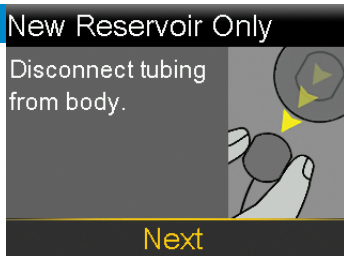
Wash hands with soap and water. On the pump, press  to go to the Menu screen.

2



Select , and then select **New Reservoir Only**.

3



Cannula housing

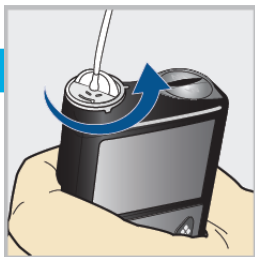
Site connector

Disconnect the tubing from the cannula housing. Do not remove the cannula housing from the body. Select **Next**.

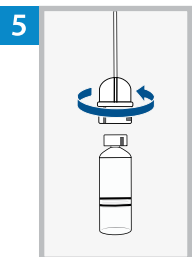
WARNING: Always confirm that the infusion set is disconnected from the body before rewinding the pump. Failing to disconnect the infusion set from the body may result in an accidental infusion of insulin, and may cause hypoglycemia.

4 New Reservoir Only
Remove reservoir from pump.
Then select Rewind.

Rewind



Remove the used reservoir from the pump.



Disconnect the infusion set tubing connector from the used reservoir. Place the tubing on a clean surface. Do not throw the tubing away.

6 New Reservoir Only
Remove reservoir from pump.
Then select Rewind.

Rewind

Select **Rewind**.

Do not connect the infusion set to the body.

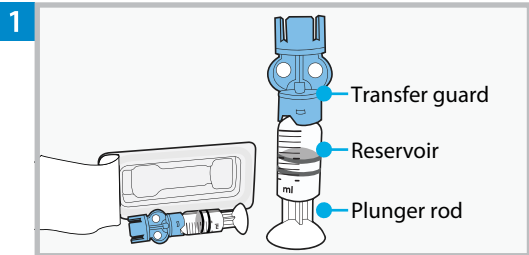


7 New Reservoir Only
1. Fill new reservoir.
2. Connect existing tubing to reservoir.
DO NOT CONNECT TO BODY.

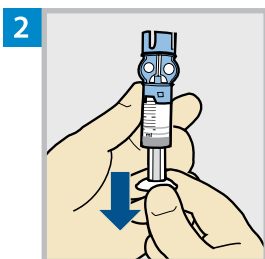
Next

Follow the next steps to fill the new reservoir with insulin and to connect the infusion set tubing to the reservoir.
Do not select **Next**.

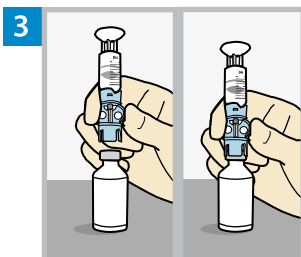
FILL THE RESERVOIR



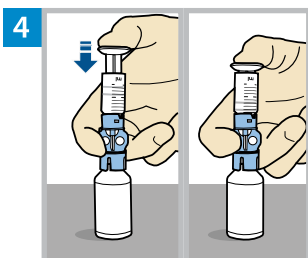
Remove the reservoir from the package. Make sure the insulin vial is at room temperature to reduce the risk of air bubbles.



Pull the plunger down to the amount of insulin needed.

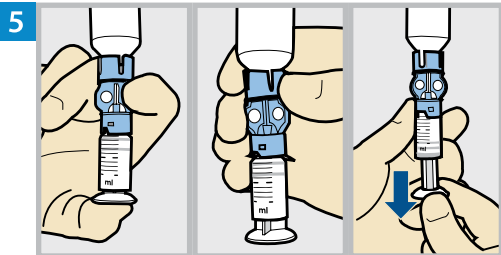
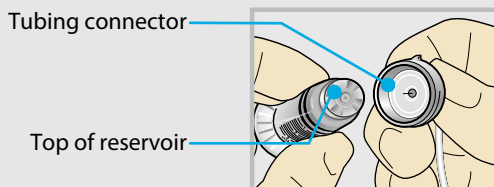


Wipe the top of the vial with alcohol. Place the vial on a sturdy, flat surface. Firmly press the transfer guard onto the vial.

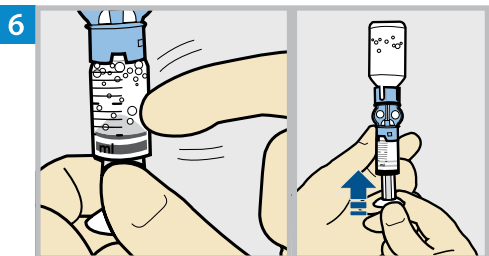


Push and hold the plunger down.

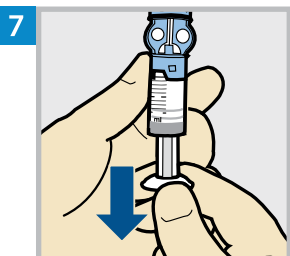
WARNING: Do not use the reservoir or infusion set if insulin or any liquid gets on the top of the reservoir or inside the tubing connector, as shown in the image. Insulin or any liquid can temporarily block the vents. This may result in the delivery of too little or too much insulin, which can cause hyperglycemia or hypoglycemia. If insulin or any liquid gets on the top of the reservoir or inside the tubing connector, start over with a new reservoir and infusion set.



Keeping a thumb on the plunger, flip the vial over so the vial is on top. Release the thumb and pull the plunger down to fill the reservoir with insulin.

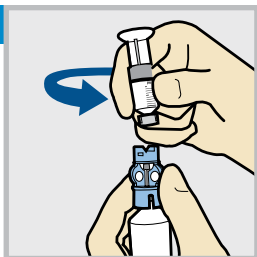


Tap the reservoir to move air bubbles to the top of the reservoir. Push the plunger up to move air into the vial.



Pull the plunger back down to allow the reservoir to fill with the amount of insulin needed.

8

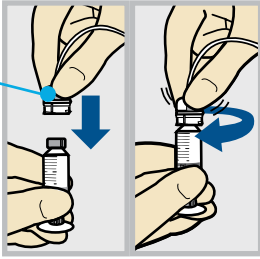


To avoid getting insulin on the top of the reservoir, **flip the vial over again so the reservoir is on top.** Hold the transfer guard and turn the reservoir counter-clockwise and remove the reservoir from the transfer guard.

CONNECT THE INFUSION SET TO THE FILLED RESERVOIR

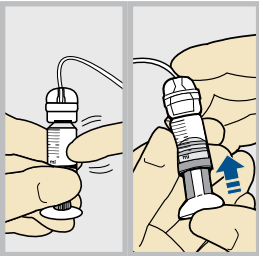
1

Tubing connector



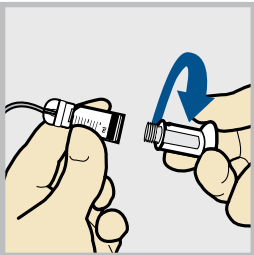
Gently push the tubing connector onto the reservoir. Turn the connector clockwise until it is locked into place.

2



Tap the reservoir to move any air bubbles to the top. Push the plunger slightly to move the bubbles into the tubing.

3



Twist the plunger counter-clockwise to loosen it and to remove it.

PLACE THE RESERVOIR INTO THE PUMP

1 New Reservoir Only

1. Fill new reservoir.
 2. Connect existing tubing to reservoir.
- DO NOT CONNECT TO BODY.

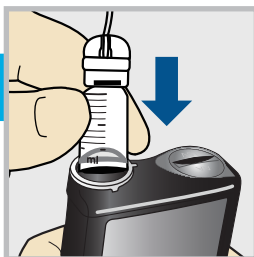
Next

Select **Next**.

2 New Reservoir Only

3. Place reservoir into pump and lock.
- DO NOT CONNECT TO BODY.

Next

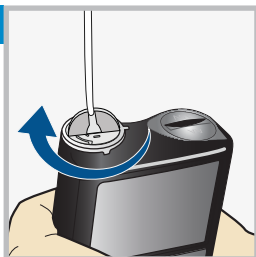


Place the reservoir into the pump.

Do not connect the infusion set to the body.

WARNING: Always confirm that the infusion set is disconnected from the body before placing the reservoir into the pump. Failing to disconnect the infusion set from the body may result in an accidental infusion of insulin, and may cause hypoglycemia.

3



New Reservoir Only

3. Place reservoir into pump and lock.
- DO NOT CONNECT TO BODY.

Next

Turn the reservoir clockwise until the reservoir locks into place, and select **Next**.

LOAD THE RESERVOIR AND FILL THE TUBING


1 Load Reservoir

Select Load and hold until complete.
DO NOT
CONNECT TO
BODY.



Load

Next

Select **Load** and hold  until the checkmark appears on the screen. **Do not** connect the infusion set to the body.

2 Load Reservoir

Complete

DO NOT
CONNECT TO
BODY.



Load

Next

When the checkmark appears, select **Next**.

WARNING: Always confirm that the infusion set is disconnected from the body before loading the reservoir and filling the tubing. Failing to disconnect the infusion set from the body may result in an accidental infusion of insulin, and may cause hypoglycemia.

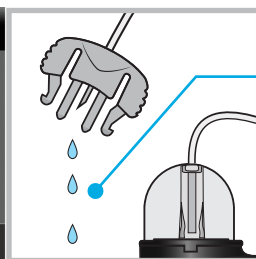
3 Fill Tubing

DO NOT CONNECT TO
BODY.
Hold Fill until drops appear.
Then select Next.


0.0_u

Fill

Next



Drops at end
of tubing

Select **Fill** and keep holding  until there are no air bubbles visible in the tubing, and there are drops at the end of the tubing.

Do not connect the infusion set to the body.

4 Fill Tubing

DO NOT CONNECT TO
BODY.

Hold Fill until drops appear.
Then select Next.

11.3_u

Fill

Next

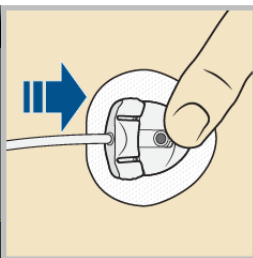
After drops appear, press  and select **Next**.

RECONNECT THE TUBING TO THE INFUSION SITE

1 Reconnect Tubing

1. Connect tubing to the infusion site.
2. Select Resume Basal.

Resume Basal



Hold the cannula housing with a finger, and insert the site connector straight into the cannula housing. There will be a click when the site connector is correctly inserted.

2 Reconnect Tubing

1. Connect tubing to the infusion site.
2. Select Resume Basal.

Resume Basal

It is not necessary to fill the cannula because the infusion set was not changed. Select **Resume Basal**.



The reservoir change is now complete.

Always check blood glucose using a blood glucose meter one to three hours after changing the infusion set or reservoir.

Note: Remove the transfer guard from the vial. Dispose of the transfer guard and the used reservoir in an appropriate sharps container and in accordance with local laws.

Changing the Extended Infusion Set Only




The Extended infusion set can be used for up to seven days. If only the infusion set needs to be changed before seven full days of use, the New Set Only option may be used to change the infusion set. The Extended reservoir must still be replaced after seven days of use.

START HERE

Follow these steps to change the infusion set and to keep the current reservoir.

1



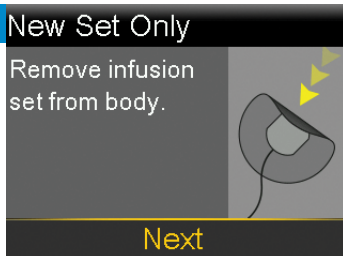
Wash hands with soap and water. On the pump, press  to go to the Menu screen.

2



Select , and then select **New Set Only**.

3

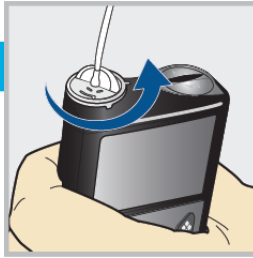


Remove the entire infusion set by loosening the adhesive and pulling the set away from the body. Select **Next**.

WARNING: Always confirm that the infusion set is disconnected from the body before rewinding the pump. Failing to disconnect the infusion set from the body may result in an accidental infusion of insulin, and may cause hypoglycemia.

4 New Set Only
Remove reservoir from pump.
Then select Rewind.

Rewind



Remove the reservoir from the pump.

5 New Set Only
Remove reservoir from pump.
Then select Rewind.

Rewind

Select **Rewind**.
Do not connect the infusion set to the body.

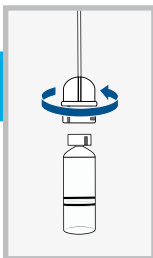


DISCONNECT THE INFUSION SET FROM THE RESERVOIR

1 New Set Only

1. Disconnect existing tubing from the reservoir.
2. Connect new tubing to existing reservoir.

Next



Disconnect the tubing connector of the used infusion set tubing from the reservoir. Place the reservoir on a clean surface. Do not throw the reservoir away.

CONNECT THE INFUSION SET TO THE RESERVOIR

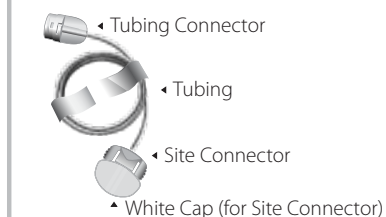
1 New Set Only

1. Disconnect existing tubing from the reservoir.
2. Connect new tubing to existing reservoir.

Next

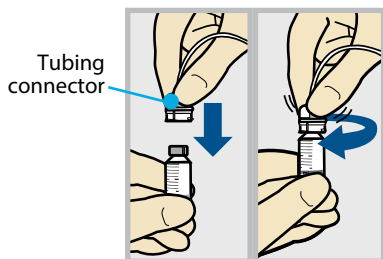
Follow these steps to connect the infusion set to the reservoir.

2 Extended Infusion Set



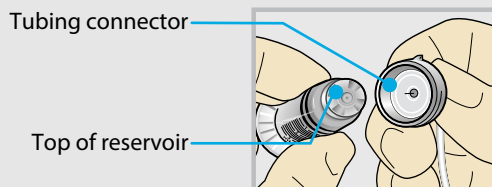
Remove the infusion set tubing from the package. Remove the paper that holds the tubing together and unwind the tubing.

3



Gently push the tubing connector onto the reservoir. Turn the connector clockwise until it is locked into place.

WARNING: Do not use the reservoir or infusion set if insulin or any liquid gets on the top of the reservoir or inside the tubing connector, as shown in the image. Insulin or any liquid can temporarily block the vents. This may result in the delivery of too little or too much insulin, which can cause hyperglycemia or hypoglycemia. If insulin or any liquid gets on the top of the reservoir or inside the tubing connector, start over with a new reservoir and infusion set.



PLACE THE RESERVOIR INTO THE PUMP

1 New Set Only

1. Disconnect existing tubing from the reservoir.
2. Connect new tubing to existing reservoir.

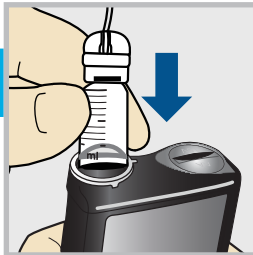
Next

Select **Next**.

2 New Set Only

3. Place reservoir into pump and lock.
- DO NOT CONNECT TO BODY.

Next

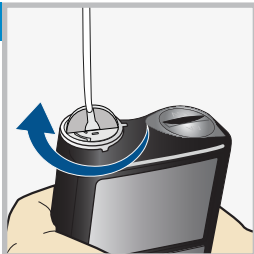


Place the reservoir into the pump.

Do not connect the infusion set to the body.

WARNING: Always confirm that the infusion set is disconnected from the body before placing the reservoir into the pump. Failing to disconnect the infusion set from the body may result in an accidental infusion of insulin, and may cause hypoglycemia.

3



- New Set Only
3. Place reservoir into pump and lock.
- DO NOT CONNECT TO BODY.

Next

Turn the reservoir clockwise until the reservoir locks into place, and select **Next**.

LOAD THE RESERVOIR AND FILL THE TUBING


1 Load Reservoir

Select **Load** and hold until complete.
DO NOT
CONNECT TO
BODY.



Load

Next

Select **Load** and hold  until the checkmark appears on the screen. **Do not** connect the infusion set to the body.

2 Load Reservoir

Complete

DO NOT
CONNECT TO
BODY.



Load

Next

When the checkmark appears, select **Next**.

WARNING: Always confirm that the infusion set is disconnected from the body before loading the reservoir and filling the tubing. Failing to disconnect the infusion set from the body may result in an accidental infusion of insulin, and may cause hypoglycemia.

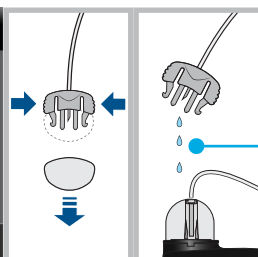
3 Fill Tubing

DO NOT CONNECT TO
BODY.
Hold Fill until drops appear.
Then select Next.


0.0_u

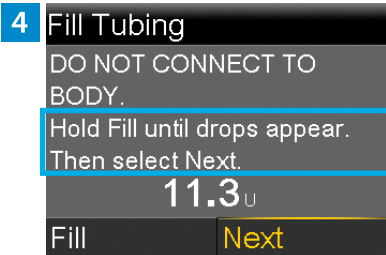
Fill

Next

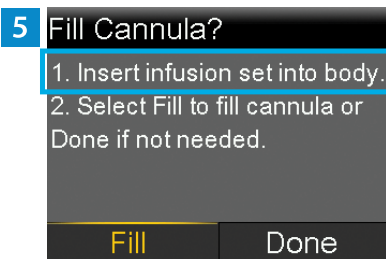


Drops at end
of tubing

Remove the white cap from the site connector by squeezing the sides of the site connector then pulling the white cap off. Select **Fill** and keep holding  until there are no air bubbles visible in the tubing, and there are drops at the end of the tubing. **Do not** connect the infusion set to the body.



After drops appear, press  and select **Next**.

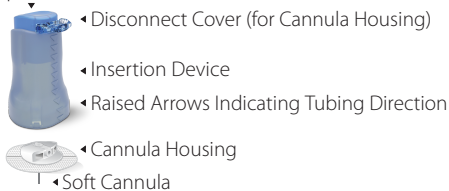


Follow the next steps to insert the infusion set before filling the cannula.

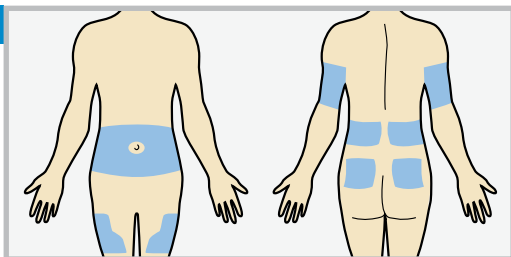
INSERT THE INFUSION SET

Extended Insertion Device

Top Button

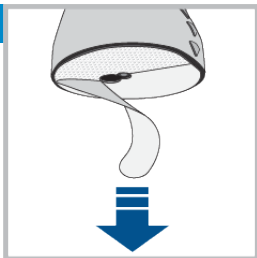


1



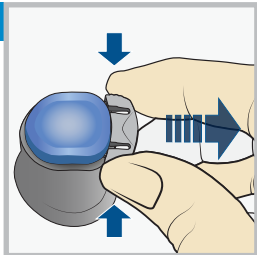
Choose an insertion site from the shaded areas. Clean the insertion site with alcohol or other antiseptic as directed by a healthcare professional.

2



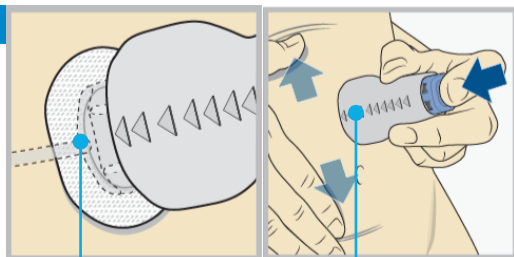
Remove the paper backing from the adhesive. Be careful not to touch the adhesive.

3



Remove the disconnect cover by gently squeezing the sides and pulling it away from the insertion device.

4

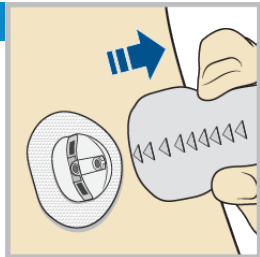


Tubing will
connect here

Arrows

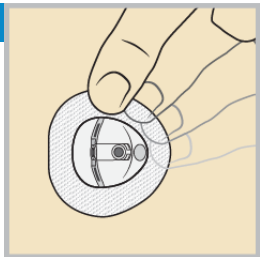
The raised arrows on the insertion device indicate the direction the tubing will run when it is connected. Stretch the skin until smooth. Place the insertion device in the desired location on your skin. Then press the top button completely down to insert the infusion set.

5



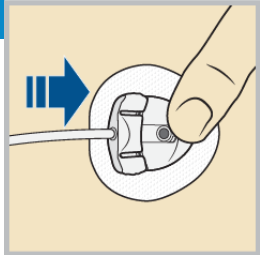
Carefully pull the insertion device straight away from the body.

6



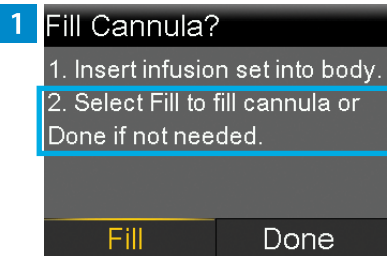
Press the adhesive against the skin all the way around the site. If the adhesive does not stick to the skin, start over with a new infusion set.

7



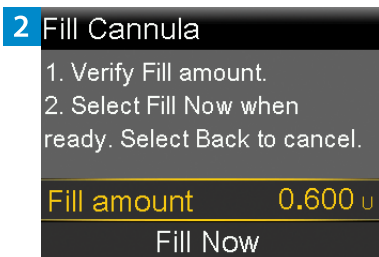
Hold the cannula housing with a finger, and insert the site connector straight into the cannula housing. There will be a click when the site connector is correctly inserted.

FILL THE CANNULA

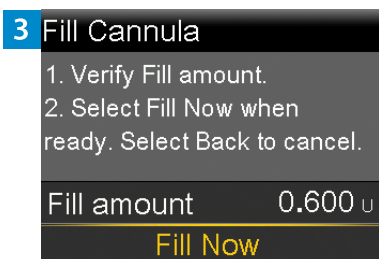


After the infusion set is inserted into the body, select **Fill**.

Note: Always verify that the amount shown in the **Fill amount** field is correct. The pump will remember the fill amount last used. Change the **Fill amount** if needed.

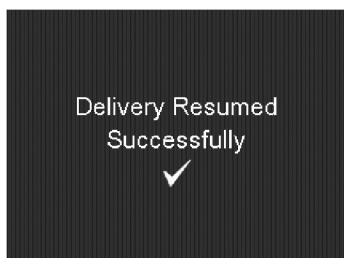


Select **Fill amount** and enter 0.600. Then press .



Select **Fill Now**.

The Home screen displays the insulin amount as insulin fills the cannula.



The infusion set change is now complete.

Always check blood glucose using a blood glucose meter one to three hours after changing the infusion set or reservoir.

Note: Dispose of all parts of the used infusion set and the insertion device in an appropriate sharps container and in accordance with local laws.

Medtronic



Medtronic MiniMed

18000 Devonshire Street

Northridge, CA 91325

USA

1 800 646 4633

+1 818 576 5555

www.medtronicdiabetes.com



(01)00763000953188(10)NA

© 2024 Medtronic
M057812C001_2
2024-07-01



M057812C001

R_x Only