

# Medtronic

## Extended™ Infusion Set and Extended™ Reservoir, and Guardian™ 4 Sensor

### Quick Reference Guide





Medtronic and Medtronic logo are trademarks of Medtronic. <sup>TM\*</sup> Third-party brands are trademarks of their respective owners. All other brands are trademarks of a Medtronic company.

# Contents

- **Changing the Medtronic Extended Infusion Set and Extended Reservoir ..... 7**

The Extended infusion set and the Extended reservoir can be used for up to seven days. In most cases, the infusion set and reservoir should be changed at the same time.
- **Disconnecting and Reconnecting the Extended Infusion Set ..... 23**
- **Changing the Extended Reservoir Only ..... 27**

The Extended reservoir can be used for up to seven days. If the reservoir runs out of insulin and the infusion set has not been used for seven full days, the New Reservoir Only option may be used to change the reservoir. The infusion set must still be replaced after seven days of use.
- **Changing the Extended Infusion Set Only ..... 39**

The Extended infusion set can be used for up to seven days. If only the infusion set needs to be changed before seven full days of use, the New Set Only option may be used to change the infusion set. The Extended reservoir must still be replaced after seven days of use.
- **Inserting the Guardian™ 4 Sensor with One-press Serter ..... 53**



**WARNING:** The following warning applies to changing the reservoir and infusion set, changing the reservoir only, and changing the infusion set only.

Always confirm that the infusion set tubing is disconnected from the body before doing the following steps:

- placing the reservoir into the pump
- rewinding the pump
- loading the reservoir
- filling the infusion set tubing

Failing to disconnect the infusion set tubing from the body may result in an accidental infusion of insulin, and may cause hypoglycemia.



# Changing the Medtronic Extended Infusion Set and Extended Reservoir



The Extended infusion set and the Extended reservoir can be used for up to seven days. In most cases, the infusion set and reservoir should be changed at the same time.


**Note:** The Extended infusion set and Extended reservoir can be used for up to seven days. To avoid wasting insulin, fill the reservoir with enough insulin to last until the next infusion set change.

## START HERE

Follow these steps to change the infusion set and reservoir.

1



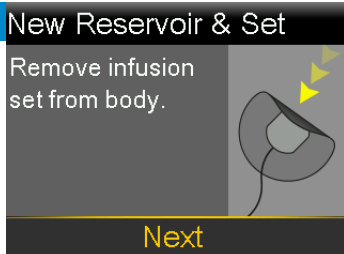
Wash hands with soap and water. On the pump, press  to go to the Menu screen.

2



Select , and then select **New Reservoir & Set**.

3

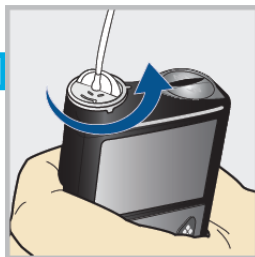


Remove the infusion set by loosening the adhesive and pulling the set away from the body. Select **Next**.

**WARNING:** Always confirm that the infusion set is disconnected from the body before rewinding the pump. Failing to disconnect the infusion set from the body may result in an accidental infusion of insulin, and may cause hypoglycemia.

**4** New Reservoir & Set  
 Remove reservoir from pump.  
 Then select Rewind.

Rewind



Remove the used reservoir from the pump.

**5** New Reservoir & Set  
 Remove reservoir from pump.  
 Then select Rewind.

Rewind

Select **Rewind**.  
**Do not** connect the infusion set to the body.

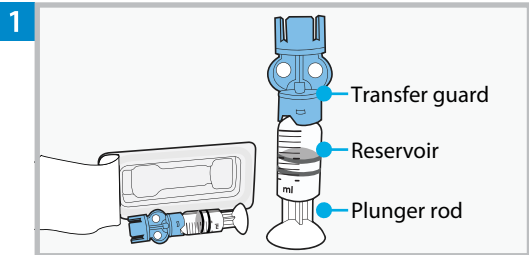


**6** New Reservoir & Set  
 1. Fill new reservoir.  
 2. Connect new tubing to reservoir.  
 DO NOT CONNECT TO BODY.

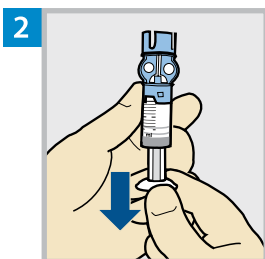
Next

Follow the next steps to fill the new reservoir with insulin and to connect the new infusion set tubing.  
 Do not select **Next**.

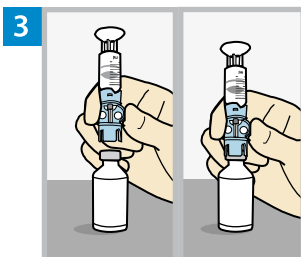
## FILL THE RESERVOIR



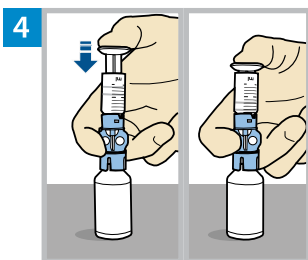
Remove the reservoir from the package. Make sure the insulin vial is at room temperature to reduce the risk of air bubbles.



Pull the plunger down to the amount of insulin needed.

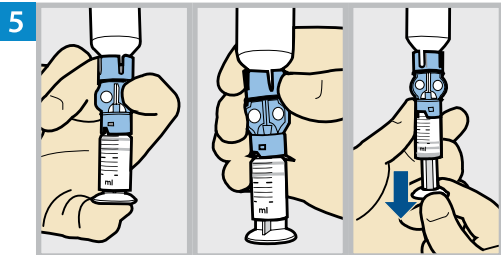
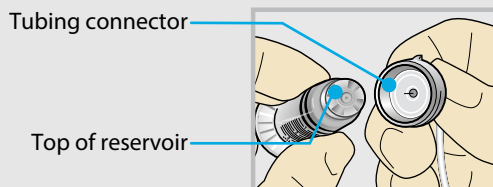


Wipe the top of the vial with alcohol. Place the vial on a sturdy, flat surface. Firmly press the transfer guard onto the vial.

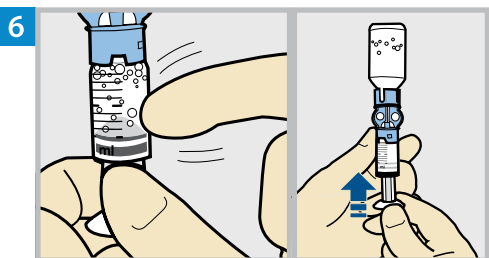


Push and hold the plunger down.

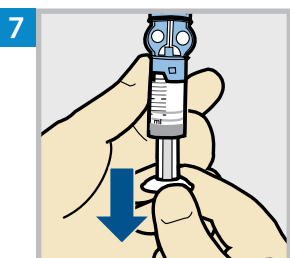
**WARNING:** Do not use the reservoir or infusion set if insulin or any liquid gets on the top of the reservoir or inside the tubing connector, as shown in the image. Insulin or any liquid can temporarily block the vents. This may result in the delivery of too little or too much insulin, which can cause hyperglycemia or hypoglycemia. If insulin or any liquid gets on the top of the reservoir or inside the tubing connector, start over with a new reservoir and infusion set.



Keeping a thumb on the plunger, flip the vial over so the vial is on top. Release the thumb and pull the plunger down to fill the reservoir with insulin.

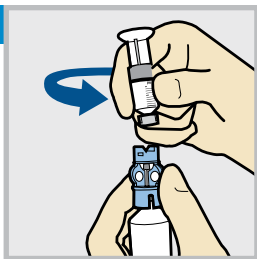


Tap the reservoir to move air bubbles to the top of the reservoir. Push the plunger up to move air into the vial.



Pull the plunger back down to allow the reservoir to fill with the amount of insulin needed.

8

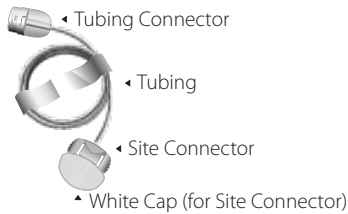


To avoid getting insulin on the top of the reservoir, **flip the vial over again so the reservoir is on top.** Hold the transfer guard and turn the reservoir counter-clockwise and remove the reservoir from the transfer guard.



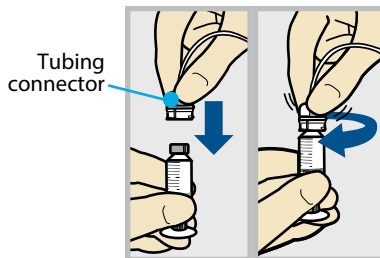
## CONNECT THE INFUSION SET TO THE FILLED RESERVOIR

### 1 Extended Infusion Set



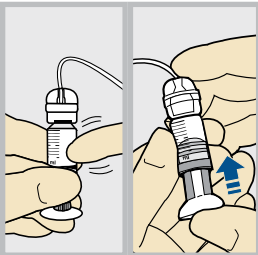
Remove the infusion set tubing from the package. Remove the paper that holds the tubing together and unwind the tubing.

### 2



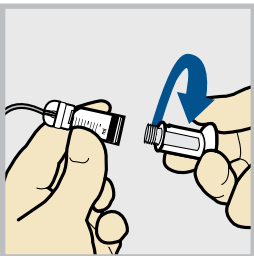
Gently push the tubing connector onto the reservoir. Turn the connector clockwise until it is locked into place.

### 3





Tap the reservoir to move any air bubbles to the top. Push the plunger slightly to move the bubbles into the tubing.

### 4



Twist the plunger counter-clockwise to loosen it and to remove it.

## PLACE THE RESERVOIR INTO THE PUMP

**Note:** If the backlight turns off, press any button to turn the screen back on. If you see the Home screen with a red banner, press  to go to the menu screen, and then select . Go through the steps until you reach the screen shown below.

### 1 New Reservoir & Set

1. Fill new reservoir.
  2. Connect new tubing to reservoir.
- DO NOT CONNECT TO BODY.

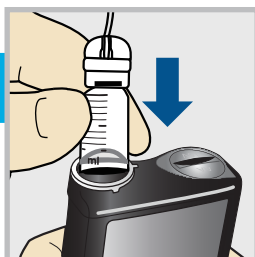
Next

Select **Next**.

### 2 New Reservoir & Set

3. Place reservoir into pump and lock.
- DO NOT CONNECT TO BODY.

Next

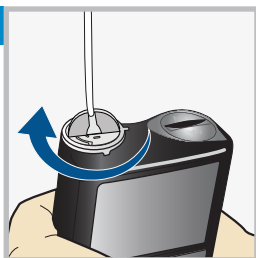


Place the reservoir into the pump.

**Do not** connect the infusion set to the body.

**WARNING:** Always confirm that the infusion set is disconnected from the body before placing the reservoir into the pump. Failing to disconnect the infusion set from the body may result in an accidental infusion of insulin, and may cause hypoglycemia.

### 3



### New Reservoir & Set

3. Place reservoir into pump and lock.
- DO NOT CONNECT TO BODY.

Next

Turn the reservoir clockwise until the reservoir locks into place, and select **Next**.

## LOAD THE RESERVOIR AND FILL THE TUBING


### 1 Load Reservoir

Select Load and hold until complete.  
DO NOT  
CONNECT TO  
BODY.



Load

Next

Select **Load** and hold  until the checkmark appears on the screen. **Do not** connect the infusion set to the body.

### 2 Load Reservoir

Complete

DO NOT  
CONNECT TO  
BODY.



Load

Next

When the checkmark appears, select **Next**.

**WARNING:** Always confirm that the infusion set is disconnected from the body before loading the reservoir and filling the tubing. Failing to disconnect the infusion set from the body may result in an accidental infusion of insulin, and may cause hypoglycemia.

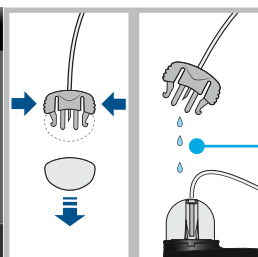
### 3 Fill Tubing

DO NOT CONNECT TO  
BODY.  
Hold Fill until drops appear.  
Then select Next.

0.0<sub>u</sub>


Fill

Next

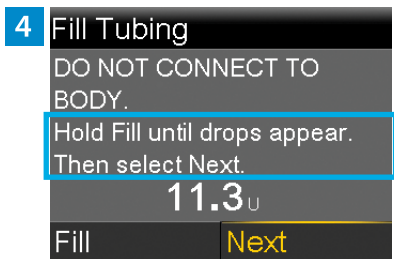


Drops at end  
of tubing

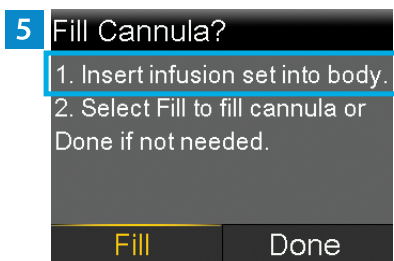
Remove the white cap from the site connector by squeezing the sides of the site connector then pulling the white cap off.

Select **Fill** and keep holding  until there are no air bubbles visible in the tubing, and there are drops at the end of the tubing.

**Do not** connect the infusion set to the body.



After drops appear, press  and select **Next**.



Follow the next steps to insert the infusion set before filling the cannula.

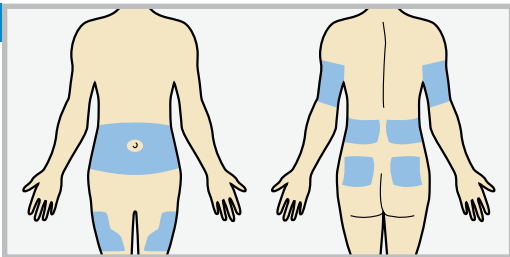
## INSERT THE INFUSION SET

### Extended Insertion Device

Top Button

- ◀ Disconnect Cover (for Cannula Housing)
- ◀ Insertion Device
- ◀ Raised Arrows Indicating Tubing Direction
- ◀ Cannula Housing
- ◀ Soft Cannula

1



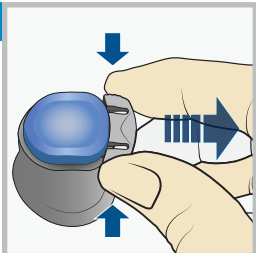
Choose an insertion site from the shaded areas. Clean the insertion site with alcohol or other antiseptic as directed by a healthcare professional.

2

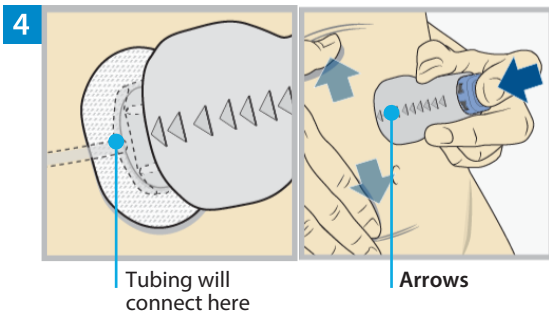


Remove the paper backing from the adhesive. Be careful not to touch the adhesive.

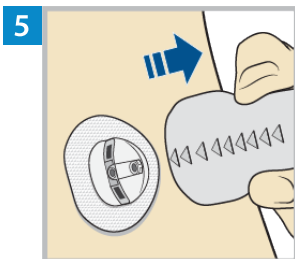
3



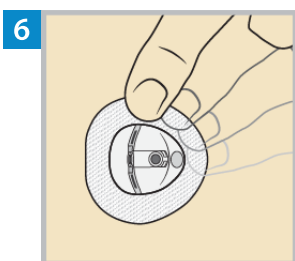
Remove the disconnect cover by gently squeezing the sides and pulling it away from the insertion device.



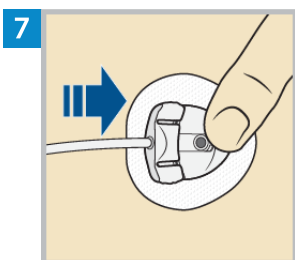
The raised arrows on the insertion device indicate the direction the tubing will run when it is connected. Stretch the skin until smooth. Place the insertion device in the desired location on your skin. Then press the top button completely down to insert the infusion set.



Carefully pull the insertion device straight away from the body.

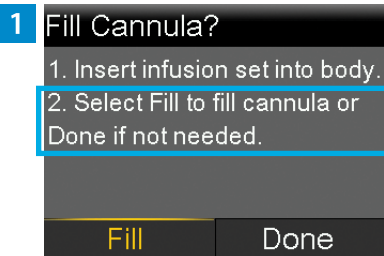


Press the adhesive against the skin all the way around the site. If the adhesive does not stick to the skin, start over with a new infusion set.



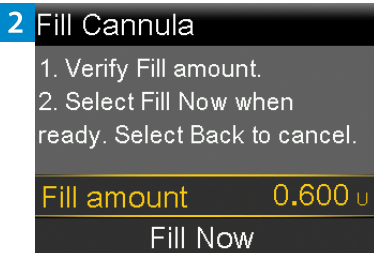
Hold the cannula housing with a finger, and insert the site connector straight into the cannula housing. There will be a click when the site connector is correctly inserted.

## FILL THE CANNULA

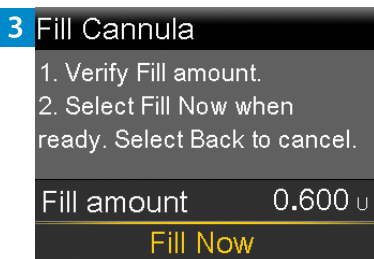


After the infusion set is inserted into the body, select **Fill**.

**Note:** Always verify that the amount shown in the **Fill amount** field is correct. The pump will remember the fill amount last used. Change the **Fill amount** if needed.

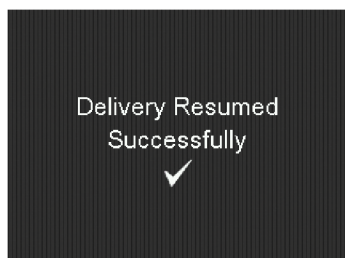


Select **Fill amount** and enter 0.600. Then press .



Select **Fill Now**.

The Home screen displays the insulin amount as insulin fills the cannula.



**The reservoir and infusion set change is now complete.**

Always check blood glucose using a blood glucose meter one to three hours after changing the infusion set or reservoir.

**Note:** Remove the transfer guard from the vial. Dispose of the transfer guard, the used reservoir and all parts of the used infusion set and the insertion device in an appropriate sharps container and in accordance with local laws.



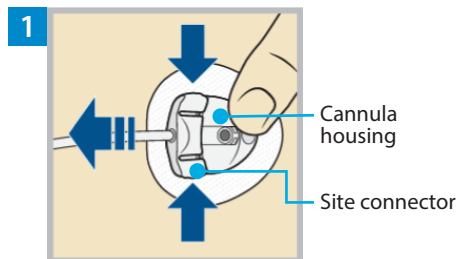




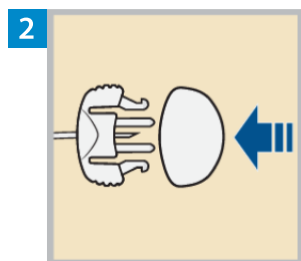
# Disconnecting and Reconnecting the Extended Infusion Set

## DISCONNECT THE INFUSION SET

Follow these steps to disconnect the infusion set. Do not remove the adhesive with the cannula housing from the body.



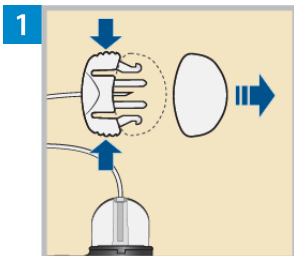
To disconnect, gently hold the cannula housing steady with a finger. Then squeeze the sides of the site connector and pull it out from the cannula housing.



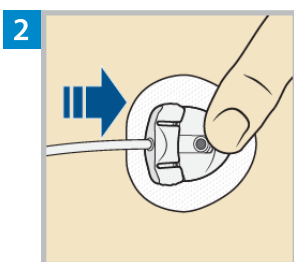
Put the white cap on the site connector.

## RECONNECT THE INFUSION SET

Follow these steps to reconnect the infusion set.



Remove the white cap from the site connector by squeezing the sides of the site connector then pulling the white cap off. Check to make sure there is no air in the tubing. If there is air in the tubing, fill the tubing with insulin as instructed earlier in this document.



Use a finger to gently hold the cannula housing steady. Push the site connector into the cannula housing until there is a click.





# Changing the Extended Reservoir Only



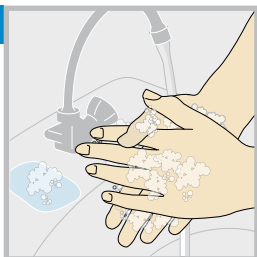
The Extended reservoir can be used for up to seven days. If the reservoir runs out of insulin and the infusion set has not been used for seven full days, the New Reservoir Only option may be used to change the reservoir. The infusion set must still be replaced after seven days of use.


**Note:** The Extended infusion set and Extended reservoir can be used for up to seven days. To avoid wasting insulin, fill the reservoir with enough insulin to last until the next infusion set change.

## START HERE

Follow these steps to change the reservoir and keep the current infusion set.

1



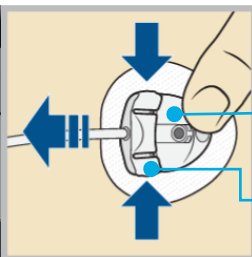
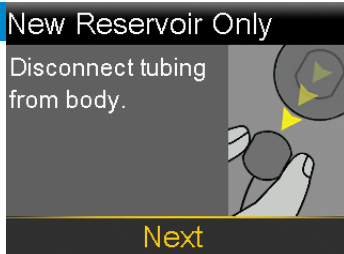
Wash hands with soap and water. On the pump, press  to go to the Menu screen.

2



Select , and then select **New Reservoir Only**.

3



Cannula housing

Site connector

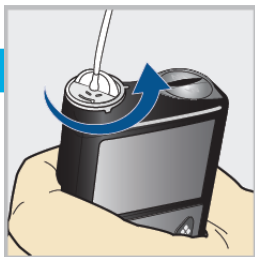
Disconnect the tubing from the cannula housing. Do not remove the cannula housing from the body. Select **Next**.

**WARNING:** Always confirm that the infusion set is disconnected from the body before rewinding the pump. Failing to disconnect the infusion set from the body may result in an accidental infusion of insulin, and may cause hypoglycemia.

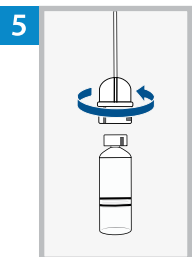


**4** New Reservoir Only  
Remove reservoir from pump.  
Then select Rewind.

Rewind



Remove the used reservoir from the pump.



Disconnect the infusion set tubing connector from the used reservoir. Place the tubing on a clean surface. Do not throw the tubing away.

**6** New Reservoir Only  
Remove reservoir from pump.  
Then select Rewind.

Rewind

Select **Rewind**.  
**Do not** connect the infusion set to the body.

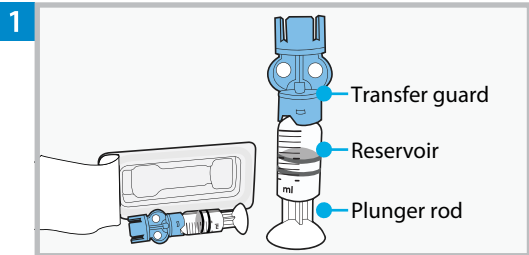


**7** New Reservoir Only  
1. Fill new reservoir.  
2. Connect existing tubing to reservoir.  
DO NOT CONNECT TO BODY.

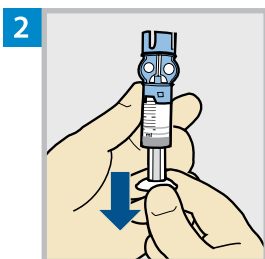
Next

Follow the next steps to fill the new reservoir with insulin and to connect the infusion set tubing to the reservoir.  
Do not select **Next**.

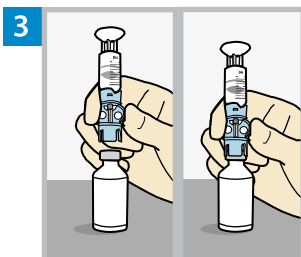
## FILL THE RESERVOIR



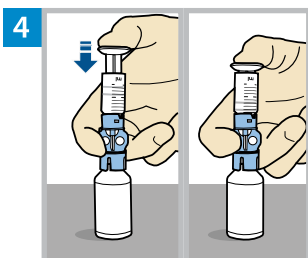
Remove the reservoir from the package. Make sure the insulin vial is at room temperature to reduce the risk of air bubbles.



Pull the plunger down to the amount of insulin needed.

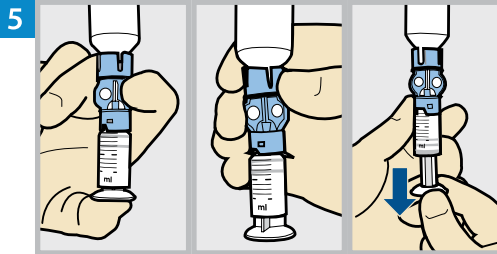
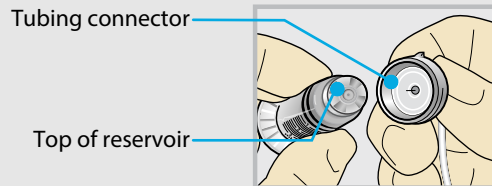


Wipe the top of the vial with alcohol. Place the vial on a sturdy, flat surface. Firmly press the transfer guard onto the vial.

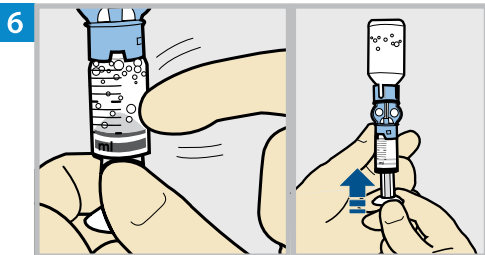


Push and hold the plunger down.

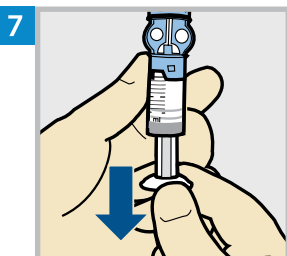
**WARNING:** Do not use the reservoir or infusion set if insulin or any liquid gets on the top of the reservoir or inside the tubing connector, as shown in the image. Insulin or any liquid can temporarily block the vents. This may result in the delivery of too little or too much insulin, which can cause hyperglycemia or hypoglycemia. If insulin or any liquid gets on the top of the reservoir or inside the tubing connector, start over with a new reservoir and infusion set.



Keeping a thumb on the plunger, flip the vial over so the vial is on top. Release the thumb and pull the plunger down to fill the reservoir with insulin.

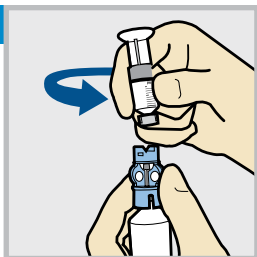


Tap the reservoir to move air bubbles to the top of the reservoir. Push the plunger up to move air into the vial.



Pull the plunger back down to allow the reservoir to fill with the amount of insulin needed.

8

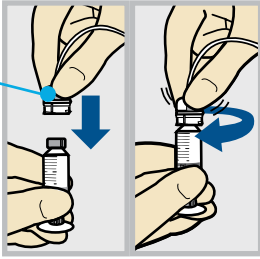


To avoid getting insulin on the top of the reservoir, **flip the vial over again so the reservoir is on top.** Hold the transfer guard and turn the reservoir counter-clockwise and remove the reservoir from the transfer guard.

## CONNECT THE INFUSION SET TO THE FILLED RESERVOIR

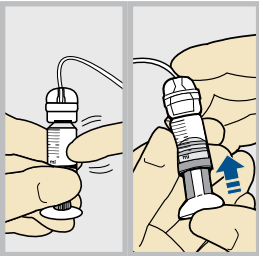
1

Tubing connector



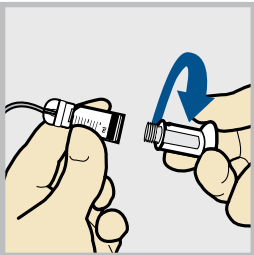
Gently push the tubing connector onto the reservoir. Turn the connector clockwise until it is locked into place.

2



Tap the reservoir to move any air bubbles to the top. Push the plunger slightly to move the bubbles into the tubing.

3



Twist the plunger counter-clockwise to loosen it and to remove it.

## PLACE THE RESERVOIR INTO THE PUMP

### 1 New Reservoir Only

1. Fill new reservoir.
  2. Connect existing tubing to reservoir.
- DO NOT CONNECT TO BODY.

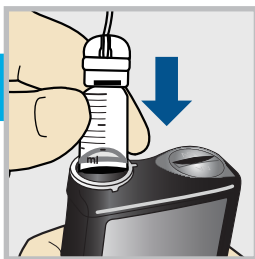
Next

Select **Next**.

### 2 New Reservoir Only

3. Place reservoir into pump and lock.
- DO NOT CONNECT TO BODY.

Next

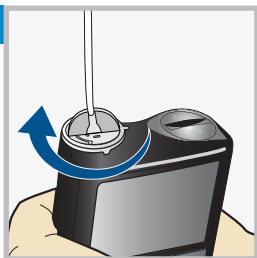


Place the reservoir into the pump.

**Do not** connect the infusion set to the body.

**WARNING:** Always confirm that the infusion set is disconnected from the body before placing the reservoir into the pump. Failing to disconnect the infusion set from the body may result in an accidental infusion of insulin, and may cause hypoglycemia.

### 3



### New Reservoir Only

3. Place reservoir into pump and lock.
- DO NOT CONNECT TO BODY.

Next

Turn the reservoir clockwise until the reservoir locks into place, and select **Next**.

## LOAD THE RESERVOIR AND FILL THE TUBING


### 1 Load Reservoir

Select Load and hold until complete.  
DO NOT  
CONNECT TO  
BODY.



Load

Next

Select **Load** and hold  until the checkmark appears on the screen. **Do not** connect the infusion set to the body.

### 2 Load Reservoir

Complete

DO NOT  
CONNECT TO  
BODY.



Load

Next

When the checkmark appears, select **Next**.

**WARNING:** Always confirm that the infusion set is disconnected from the body before loading the reservoir and filling the tubing. Failing to disconnect the infusion set from the body may result in an accidental infusion of insulin, and may cause hypoglycemia.

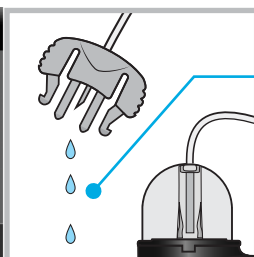
### 3 Fill Tubing

DO NOT CONNECT TO  
BODY.  
Hold Fill until drops appear.  
Then select Next.


0.0<sub>u</sub>

Fill

Next



Drops at end  
of tubing

Select **Fill** and keep holding  until there are no air bubbles visible in the tubing, and there are drops at the end of the tubing.

**Do not** connect the infusion set to the body.

### 4 Fill Tubing

DO NOT CONNECT TO  
BODY.

Hold Fill until drops appear.  
Then select Next.

11.3<sub>u</sub>

Fill

Next

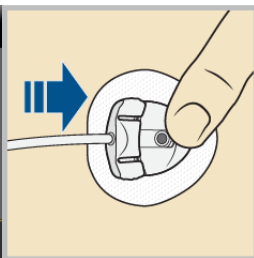
After drops appear, press  and select **Next**.

## RECONNECT THE TUBING TO THE INFUSION SITE

### 1 Reconnect Tubing

1. Connect tubing to the infusion site.
2. Select Resume Basal.

Resume Basal



Hold the cannula housing with a finger, and insert the site connector straight into the cannula housing. There will be a click when the site connector is correctly inserted.

### 2 Reconnect Tubing

1. Connect tubing to the infusion site.
2. Select Resume Basal.

Resume Basal

It is not necessary to fill the cannula because the infusion set was not changed. Select **Resume Basal**.



### The reservoir change is now complete.

Always check blood glucose using a blood glucose meter one to three hours after changing the infusion set or reservoir.

**Note:** Remove the transfer guard from the vial. Dispose of the transfer guard and the used reservoir in an appropriate sharps container and in accordance with local laws.







# Changing the Extended Infusion Set Only




The Extended infusion set can be used for up to seven days. If only the infusion set needs to be changed before seven full days of use, the New Set Only option may be used to change the infusion set. The Extended reservoir must still be replaced after seven days of use.

## START HERE

Follow these steps to change the infusion set and to keep the current reservoir.

1



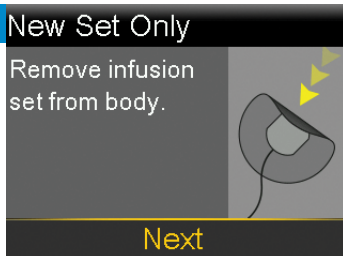
Wash hands with soap and water. On the pump, press  to go to the Menu screen.

2



Select , and then select **New Set Only**.

3

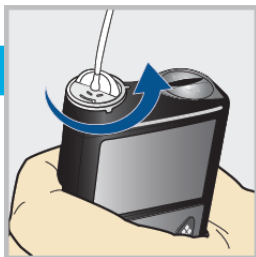


Remove the entire infusion set by loosening the adhesive and pulling the set away from the body. Select **Next**.

**WARNING:** Always confirm that the infusion set is disconnected from the body before rewinding the pump. Failing to disconnect the infusion set from the body may result in an accidental infusion of insulin, and may cause hypoglycemia.

4 New Set Only  
Remove reservoir from pump.  
Then select Rewind.

Rewind



Remove the reservoir from the pump.

5 New Set Only  
Remove reservoir from pump.  
Then select Rewind.

Rewind

Select **Rewind**.  
**Do not** connect the infusion set to the body.

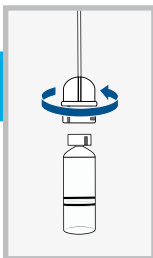


## DISCONNECT THE INFUSION SET FROM THE RESERVOIR

### 1 New Set Only

1. Disconnect existing tubing from the reservoir.
2. Connect new tubing to existing reservoir.

Next



Disconnect the tubing connector of the used infusion set tubing from the reservoir. Place the reservoir on a clean surface. Do not throw the reservoir away.

## CONNECT THE INFUSION SET TO THE RESERVOIR

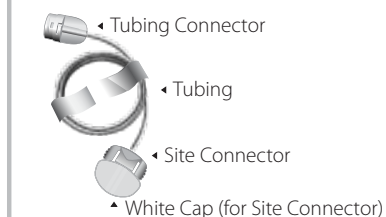
### 1 New Set Only

1. Disconnect existing tubing from the reservoir.
2. Connect new tubing to existing reservoir.

Next

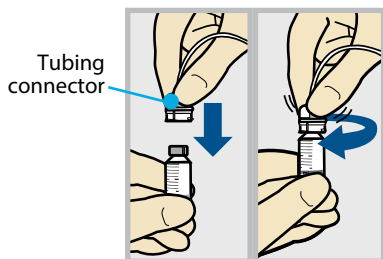
Follow these steps to connect the infusion set to the reservoir.

### 2 Extended Infusion Set



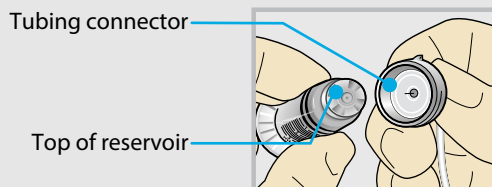
Remove the infusion set tubing from the package. Remove the paper that holds the tubing together and unwind the tubing.

### 3



Gently push the tubing connector onto the reservoir. Turn the connector clockwise until it is locked into place.

**WARNING:** Do not use the reservoir or infusion set if insulin or any liquid gets on the top of the reservoir or inside the tubing connector, as shown in the image. Insulin or any liquid can temporarily block the vents. This may result in the delivery of too little or too much insulin, which can cause hyperglycemia or hypoglycemia. If insulin or any liquid gets on the top of the reservoir or inside the tubing connector, start over with a new reservoir and infusion set.





## PLACE THE RESERVOIR INTO THE PUMP

### 1 New Set Only

1. Disconnect existing tubing from the reservoir.
2. Connect new tubing to existing reservoir.

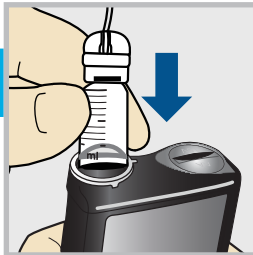
Next

Select **Next**.

### 2 New Set Only

3. Place reservoir into pump and lock.
- DO NOT CONNECT TO BODY.

Next

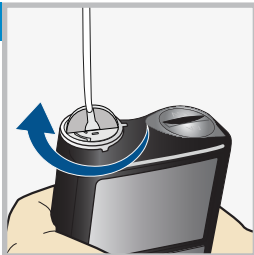


Place the reservoir into the pump.

**Do not** connect the infusion set to the body.

**WARNING:** Always confirm that the infusion set is disconnected from the body before placing the reservoir into the pump. Failing to disconnect the infusion set from the body may result in an accidental infusion of insulin, and may cause hypoglycemia.

### 3



- New Set Only
3. Place reservoir into pump and lock.
- DO NOT CONNECT TO BODY.

Next

Turn the reservoir clockwise until the reservoir locks into place, and select **Next**.

## LOAD THE RESERVOIR AND FILL THE TUBING


### 1 Load Reservoir

Select **Load** and hold until complete.  
DO NOT  
CONNECT TO  
BODY.



Load

Next

Select **Load** and hold  until the checkmark appears on the screen. **Do not** connect the infusion set to the body.

### 2 Load Reservoir

Complete

DO NOT  
CONNECT TO  
BODY.



Load

Next

When the checkmark appears, select **Next**.

**WARNING:** Always confirm that the infusion set is disconnected from the body before loading the reservoir and filling the tubing. Failing to disconnect the infusion set from the body may result in an accidental infusion of insulin, and may cause hypoglycemia.

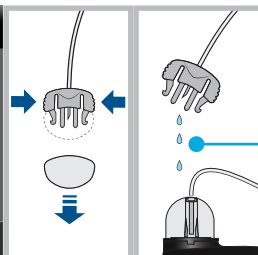
### 3 Fill Tubing

DO NOT CONNECT TO  
BODY.  
Hold Fill until drops appear.  
Then select Next.


0.0<sub>u</sub>

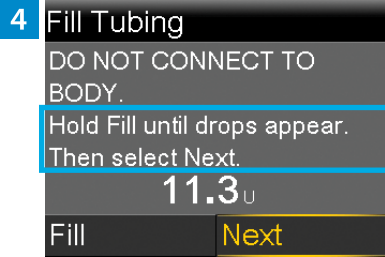
Fill

Next

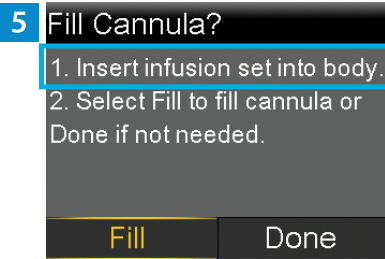


Drops at end  
of tubing

Remove the white cap from the site connector by squeezing the sides of the site connector then pulling the white cap off. Select **Fill** and keep holding  until there are no air bubbles visible in the tubing, and there are drops at the end of the tubing. **Do not** connect the infusion set to the body.



After drops appear, press  and select **Next**.

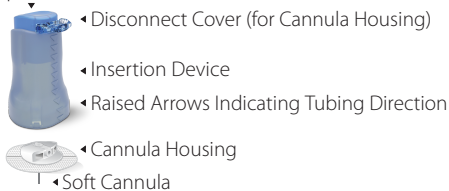


Follow the next steps to insert the infusion set before filling the cannula.

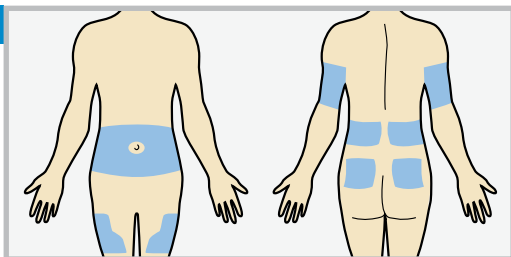
## INSERT THE INFUSION SET

### Extended Insertion Device

Top Button

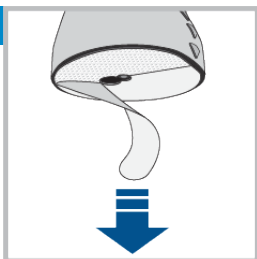


1



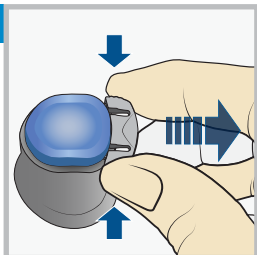
Choose an insertion site from the shaded areas. Clean the insertion site with alcohol or other antiseptic as directed by a healthcare professional.

2



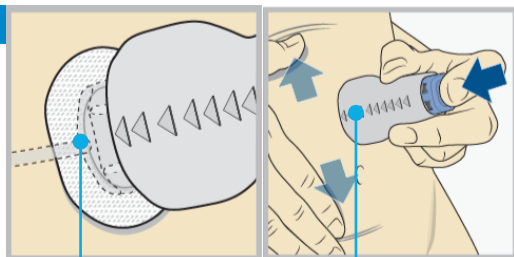
Remove the paper backing from the adhesive. Be careful not to touch the adhesive.

3



Remove the disconnect cover by gently squeezing the sides and pulling it away from the insertion device.

4

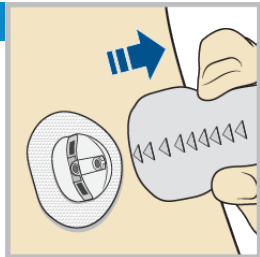


Tubing will  
connect here

Arrows

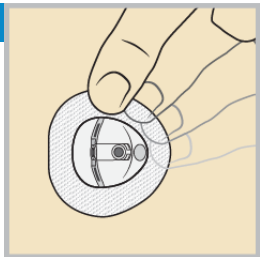
The raised arrows on the insertion device indicate the direction the tubing will run when it is connected. Stretch the skin until smooth. Place the insertion device in the desired location on your skin. Then press the top button completely down to insert the infusion set.

5



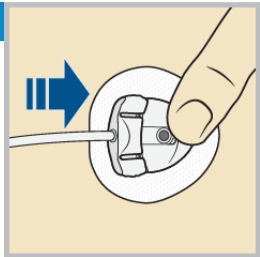
Carefully pull the insertion device straight away from the body.

6



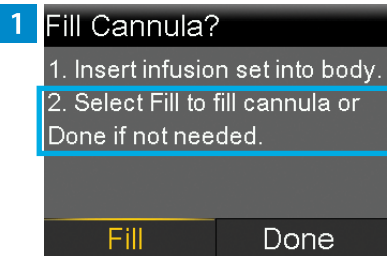
Press the adhesive against the skin all the way around the site. If the adhesive does not stick to the skin, start over with a new infusion set.

7



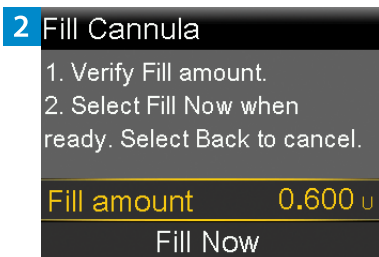
Hold the cannula housing with a finger, and insert the site connector straight into the cannula housing. There will be a click when the site connector is correctly inserted.

## FILL THE CANNULA

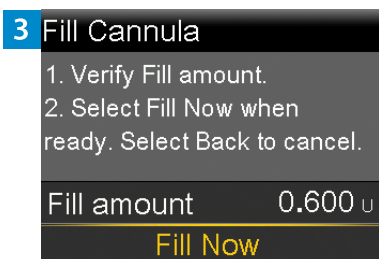


After the infusion set is inserted into the body, select **Fill**.

**Note:** Always verify that the amount shown in the **Fill amount** field is correct. The pump will remember the fill amount last used. Change the **Fill amount** if needed.

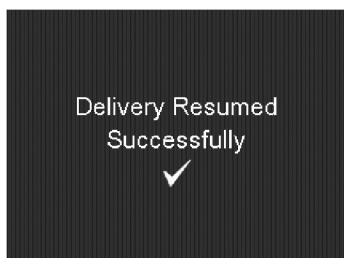


Select **Fill amount** and enter 0.600. Then press .



Select **Fill Now**.

The Home screen displays the insulin amount as insulin fills the cannula.



**The infusion set change is now complete.**

Always check blood glucose using a blood glucose meter one to three hours after changing the infusion set or reservoir.

**Note:** Dispose of all parts of the used infusion set and the insertion device in an appropriate sharps container and in accordance with local laws.





# Inserting the Guardian™ 4 Sensor with One-press Serter



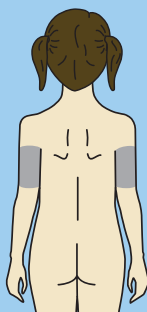
## INSERT THE SENSOR

Choose an insertion site that has an adequate amount of subcutaneous fat. The Guardian 4 sensor has been studied and is approved for use in the following sensor insertion sites by persons of the following ages:

Approved Age	Sensor Insertion Site
7 and older	Arm

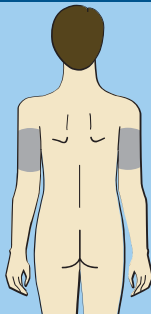
**CAUTION:** The Guardian 4 sensor is indicated for arm use only. Do not use Guardian 4 sensor in the abdomen or other body sites including the buttocks, due to unknown or different performance that could result in hypoglycemia or hyperglycemia.

Ages 7-17 years



Back of the upper arm

Ages 18 years and older



Back of the upper arm

**Note:** Assistance will likely be needed for sensor insertion into the back of the upper arm. Some users find it difficult to insert the sensor into their arm by themselves.

## INSERT A NEW SENSOR

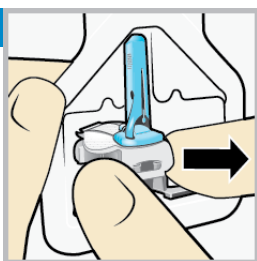
Wash hands with soap and water and clean the insertion site with alcohol.

1



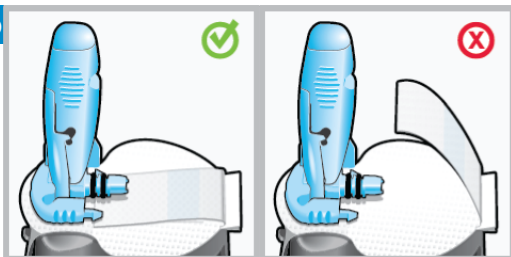
**Open the sensor package.** Pull the corner of the paper covering to open the sensor package.

2a



**Hold the sensor by the plastic pedestal.** Remove the sensor with attached pedestal from the packaging by holding the pedestal only. Place the sensor with the pedestal on a clean, flat surface (such as a table).

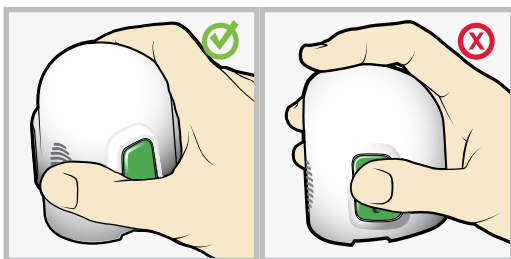
2b



**Correct**

**Incorrect**

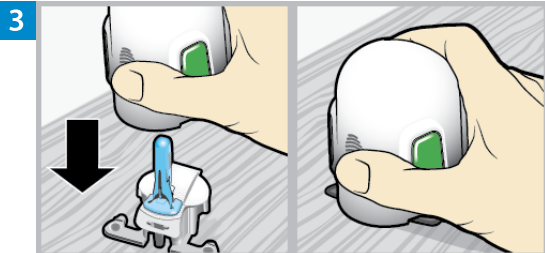
**Tuck the adhesive tab.** Make sure that the sensor's adhesive tab is tucked under the sensor connector and snaps.



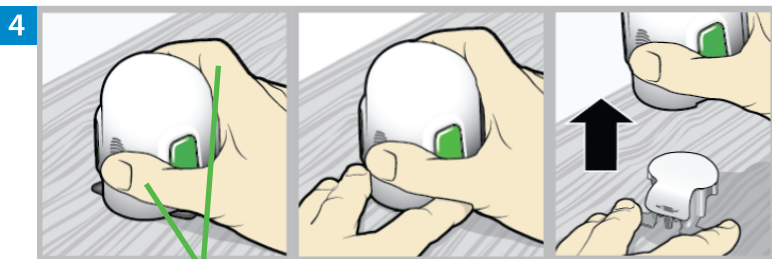
**Correct**

**Incorrect**

**Note:** Refer to the illustrations for correct and incorrect ways to hold theserter for loading.



**Load the sensor into the serter.** Grip the serter exactly as shown **with a thumb on the thumb print on the serter. Do not hold the side buttons.** Push the serter down onto the pedestal until the base of the serter sits flat on the table.

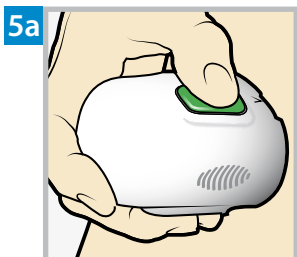


Fingers are **NOT** holding the side buttons.

**Detach the serter from the pedestal.** To detach the serter from the pedestal, grip the serter as shown with a thumb on the thumb print on the serter. With the other hand, place two fingers on the pedestal arms, and slowly pull the serter straight up.

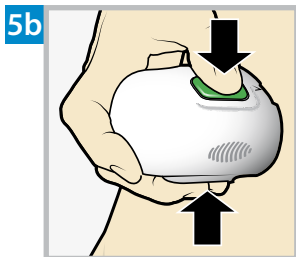
**Note:** Make sure that the pedestal is firmly on the table before pulling the serter away.

**CAUTION:** Do not detach the pedestal from the serter in mid-air as this may damage the sensor.

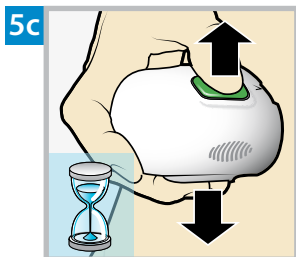


**Place the serter on the body.** Hold the serter steadily against the cleaned insertion site without pushing the serter too deeply into the skin.

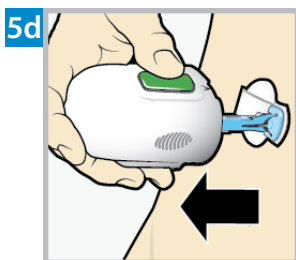
**Note:** Failing to hold the serter securely flat against the body may allow the serter to spring back after pressing buttons and result in improper insertion of the sensor.



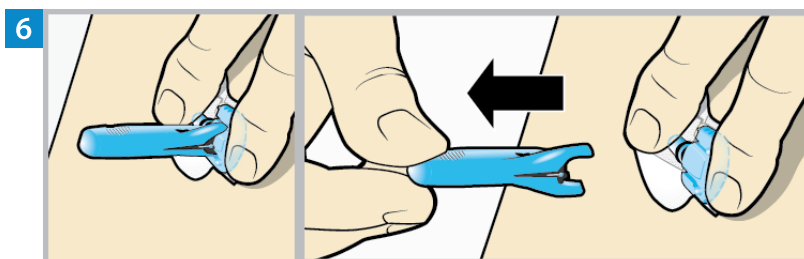
**Insert the sensor.** Press the **bump** on both buttons and release them at the same time.



**Hold the serter against the body.** Continue holding the serter against the body for at least five seconds to allow the adhesive to stick to the skin.

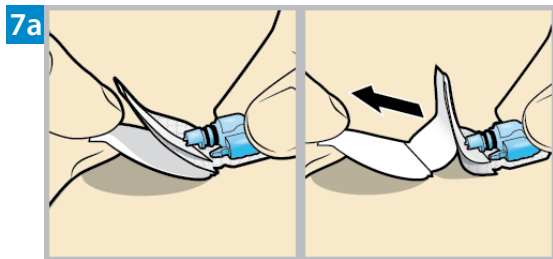


**Remove the serter from body.** Slowly pull the serter away from the skin, making sure the buttons are not pressed.

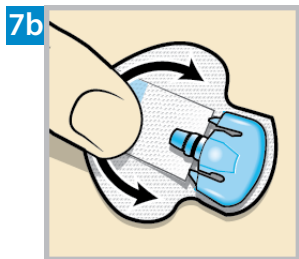


**Remove the needle housing.** Gently hold the base of the sensor against the skin with one hand. With the other hand, hold the needle housing **at the top** and slowly pull it straight away from the sensor. Dispose of the needle housing in a sharps container.

**Note:** An optional, liquid adhesive, such as Skin Tac™\*, may be used on the skin. Apply the adhesive and allow the skin to dry before removing the adhesive pad liner.

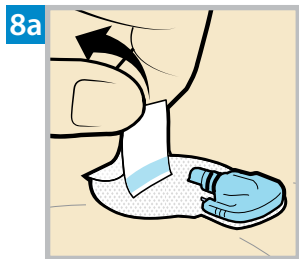


**Remove the adhesive pad liner.** Hold the sensor in place and gently remove the liner from under the adhesive pad.

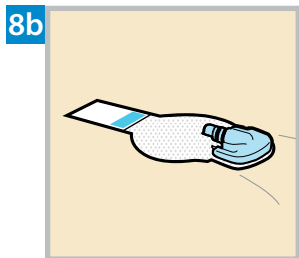


**Press the entire adhesive pad to the skin.** Firmly press the adhesive pad against the skin and smooth the entire adhesive pad so it sticks to the skin.

**Note:** The sensor adhesive is sensitive to pressure. Continue applying pressure on the adhesive to ensure that the sensor remains inserted in the skin for 7 days of wear.



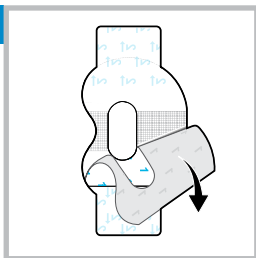
**Untuck the adhesive tab.** Untuck the adhesive tab from under the sensor connector.



**Straighten the adhesive tab.** Straighten the adhesive tab so it lies flat against the skin, but do not remove the adhesive liner yet.

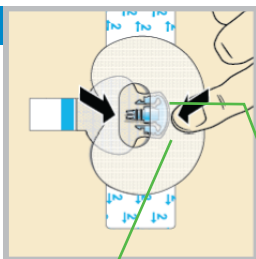
## TAPE THE SENSOR

1



Remove the liner marked 1.

2

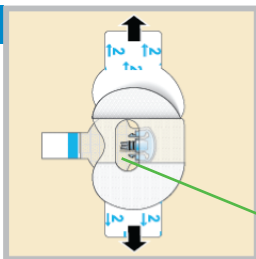


Apply the tape as shown and press down firmly.

Both sensor and skin are taped.

Wide part of tape covers half of sensor base.

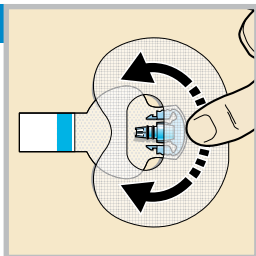
3



Remove the liner marked 2 from each side.

Connector and snaps in hole of tape.

4

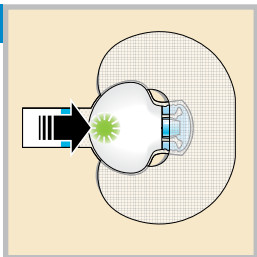


Smooth the tape.



## CONNECT THE TRANSMITTER

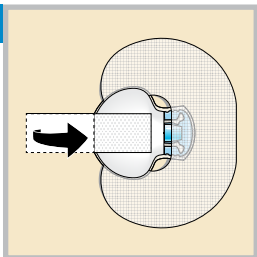
1



Connect the transmitter to the sensor.

**Note:** Wait for the green light on the transmitter to flash. If the green light does not flash, refer to Troubleshooting section of the transmitter user guide.

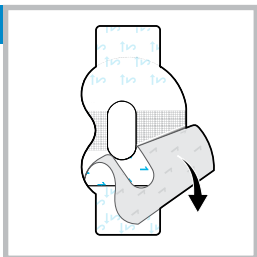
2



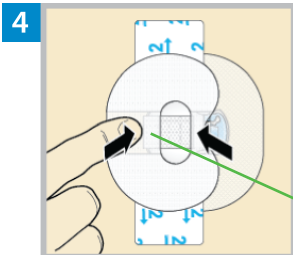
Cover the transmitter with the adhesive tab.

**Note:** Do not pull the tab too tightly.

3

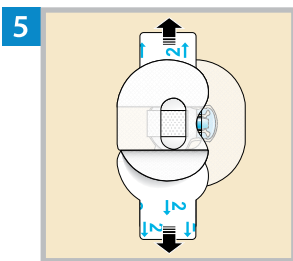


To apply the 2nd tape, remove the liner marked 1.

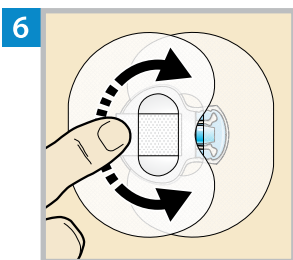


Rotate the 2nd tape and place the tape over the transmitter. Press down firmly.

Wide part of tape covers end of transmitter and skin.

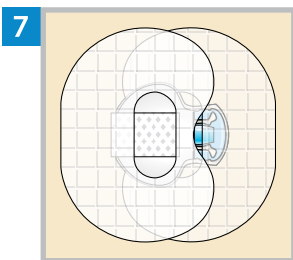


Remove the liner marked 2 from each side.



Smooth the tape.

**Note:** Check the site regularly. Apply additional off-the-shelf tape if the sensor and the transmitter are not secure.



This image is an example of the tape applied correctly.

## START THE SENSOR

### 1 Sensor connected

If new sensor, select Start New. If not, select Reconnect.

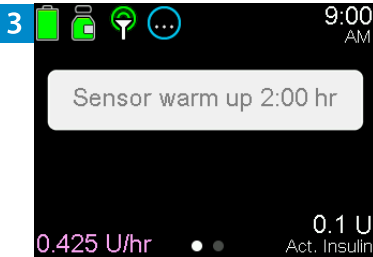
After **Sensor connected** message appears, press ▼. The message typically takes less than a minute to appear, but may take up to 5 minutes.

### 2 Sensor connected Reconnect.

Start New Sensor

Reconnect Sensor

Select **Start New Sensor**.



**Sensor warm up X:XX hr** will appear on the Home screen. After the warm up is complete, the pump begins receiving SG readings.









# Medtronic



**Medtronic MiniMed**

18000 Devonshire Street

Northridge, CA 91325

USA

1 800 646 4633

+1 818 576 5555

[www.medtronicdiabetes.com](http://www.medtronicdiabetes.com)



(01)00763000953270(10)NA

© 2024 Medtronic  
M057815C001\_2  
2024-07-01



\*M057815C001\*

R<sub>x</sub> Only