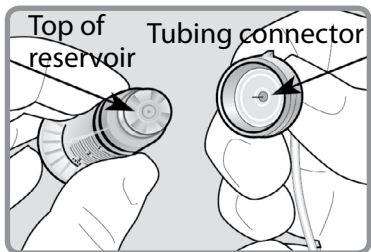


WARNING: If insulin, or any liquid, gets inside the tubing connector, it can temporarily block the vents that allow the pump to properly prime the infusion set. This may result in the delivery of too little or too much insulin, which can cause hypoglycemia or hyperglycemia. To prevent insulin from getting inside the Quick-set tubing connector, after you fill the reservoir make sure you hold the insulin vial upright when you remove the reservoir from the transfer guard. If you do not hold the insulin vial upright, insulin can get on the top of the reservoir and could transfer liquid into the tubing connector.



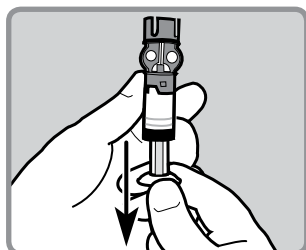
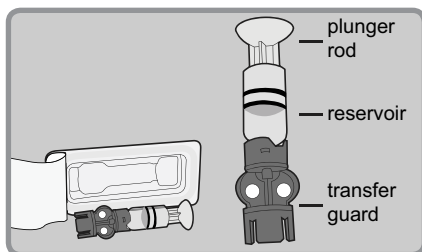
To Rewind the Piston in the Pump:

1. Wash your hands. Remove the old infusion set from your body and the reservoir from the pump.
2. Select **Prime** in the **MAIN MENU**. Then select **Rewind** to open the **REWIND** screen. Press **ACT** to rewind.

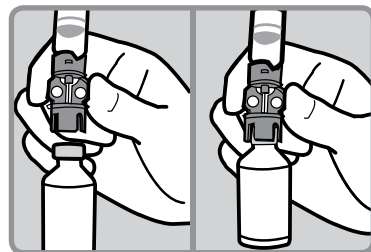


To Fill the Reservoir:

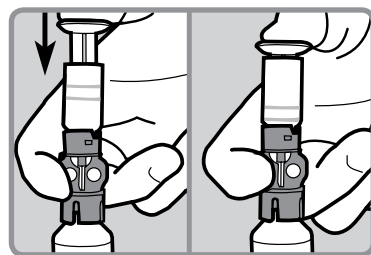
1. Remove the reservoir from the package.
2. Pull the plunger down to fill the reservoir with air.



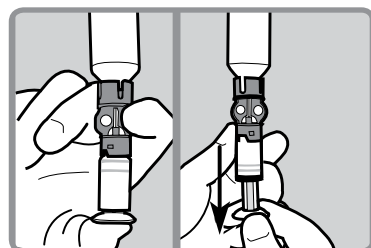
3. Wipe the top of the insulin vial with alcohol. Hold the blue transfer guard and press it down onto the insulin vial.



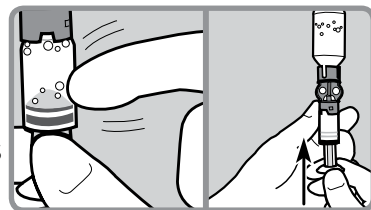
4. Push down on the plunger to push air from the reservoir into the vial. Continue to hold the plunger down.



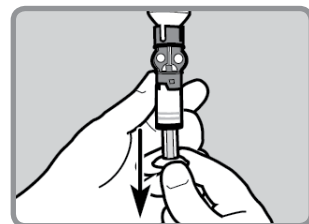
5. Flip the vial over so it is now on top. Slowly pull the plunger down to fill the reservoir.



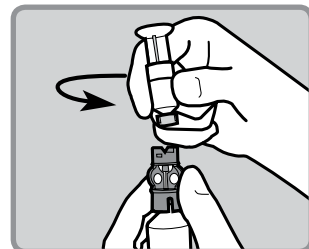
6. Check the reservoir for air bubbles. Tap the side of the reservoir to force any bubbles to rise to the top. Push the plunger up to move the air bubbles from the reservoir into the insulin vial.



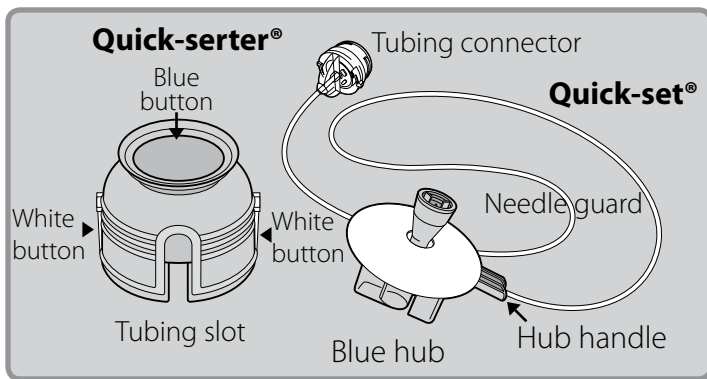
7. After the air bubbles are removed, slowly pull the plunger down to fill the reservoir with enough insulin to last 2-3 days.



8. To avoid getting insulin on the top of the reservoir, flip the vial over, so the vial is upright. Hold the transfer guard, and turn the reservoir counter-clockwise. Pull the reservoir straight up to disconnect it from the transfer guard. Discard the transfer guard into a sharps container.

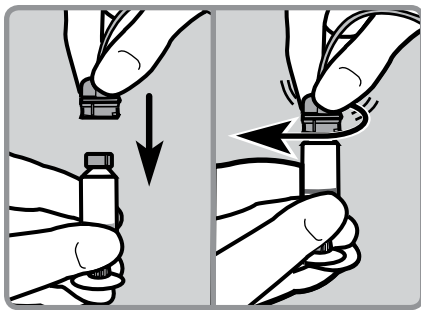


To Connect the Reservoir to the Tubing:



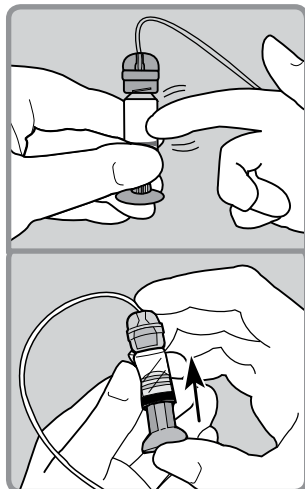
1. Remove the Quick-set from the package.

2. Make sure the top of the reservoir is dry. Gently push the tubing connector onto the top of the reservoir and turn it clockwise until it slides and locks into place.

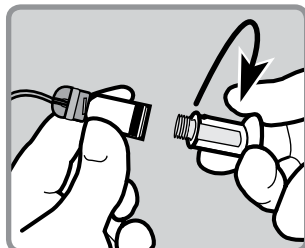


Note: If insulin or any other liquid has gotten on the top of the reservoir or inside the tubing connector, discard both and start over with a new reservoir and Quick-set infusion set.

3. Tap the side of the reservoir to force any remaining air bubbles to rise to the top. Push up on the plunger until the bubbles are out and you see insulin in the tubing.

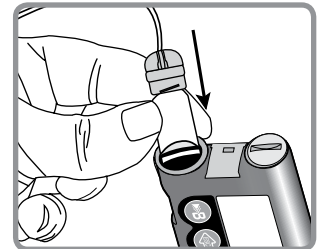


4. Turn the plunger counter-clockwise to unscrew it from the reservoir. Be careful not to pull the plunger before it is disconnected, or insulin will spill out.

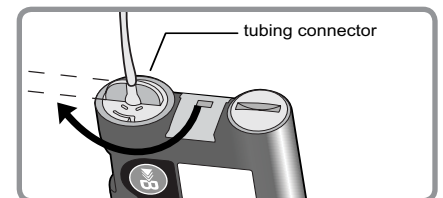


To Prime the Tubing:

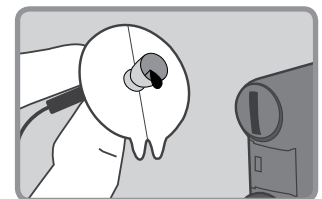
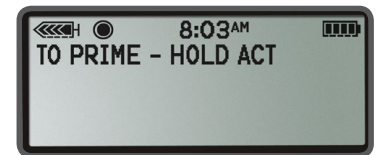
1. Press **ACT** so that **PREPARING TO PRIME** appears. Insert the newly filled reservoir into the reservoir compartment.



2. Turn the tubing connector clockwise until it locks into place.

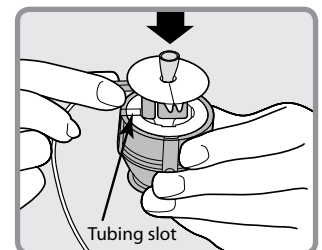


3. Press and hold **ACT** to prime the tubing. The pump will beep as the tubing fills. Release **ACT** when you see drops coming out of the Quick-set needle. Then press **ESC**. You are now ready to insert the Quick-set infusion set.

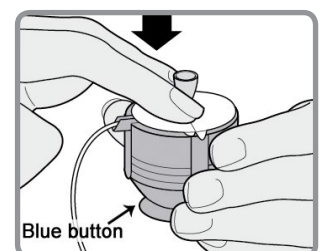


To Load the Quick-set® into the Insertion Device:

1. Place the blue hub of the Quick-set into the Quick-serter insertion device. The hub handle and tubing should be lined up with the tubing slot on the Quick-serter.

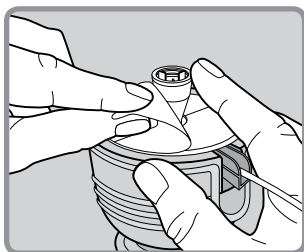


2. Use two fingers to seat the Quick-set inside the serter securely. Do not push the Quick-set all the way down. Be careful not to press the blue button or the Quick-set will not lock inside the serter.

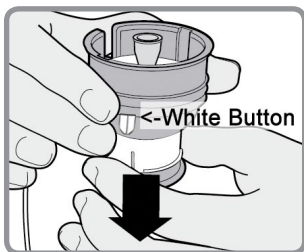


To Load the Quick-set® into the Insertion Device:

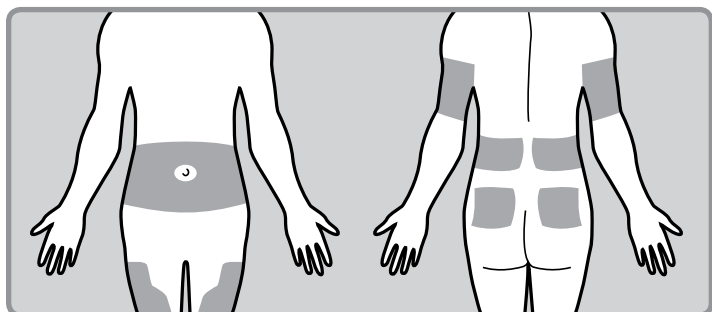
3. Peel the paper from the adhesive.



4. Pull the blue button down until you hear it click. Be careful not to press the white buttons on either side of theserter.



Choose Your Insertion Site:

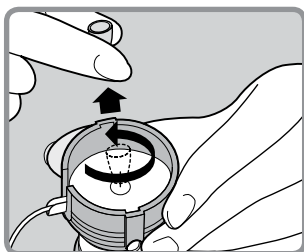


The best areas of the body to insert the infusion set are shown in the shaded areas of this drawing. Follow your healthcare provider's instructions on where to insert your infusion sets.

To Insert the Quick-set® Infusion Set:

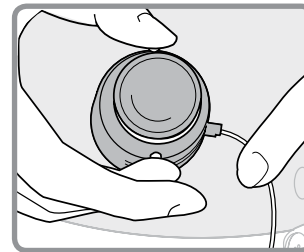
1. Wipe the selected insertion site with alcohol or other antiseptic wipe.

2. Turn the needle guard to loosen it and lift it away to expose the needle.

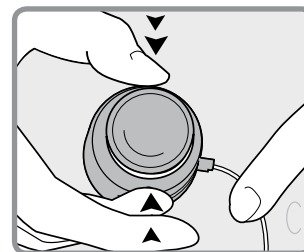


To Insert the Quick-set® Infusion Set:

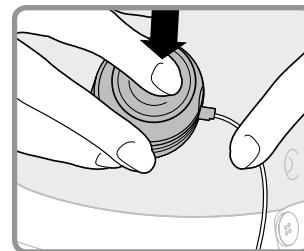
3. Hold theserter against the prepared site on your body.



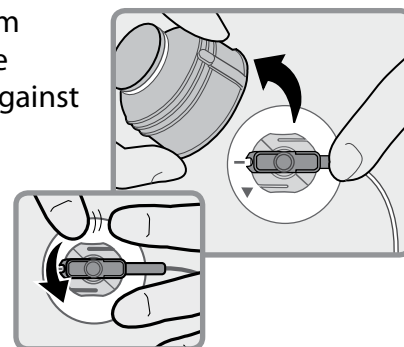
4. Press the two white buttons at the same time. If they are not pressed at the same time the Quick-set will not insert properly.



5. Press down the blue button of theserter to release the Quick-set.

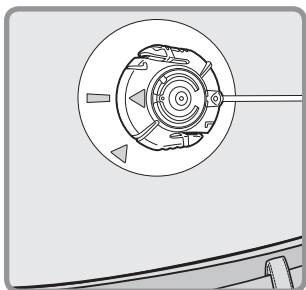
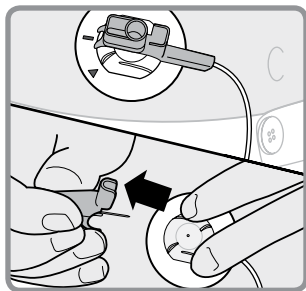


6. Pullserter away from your body. Press the adhesive securely against your skin.

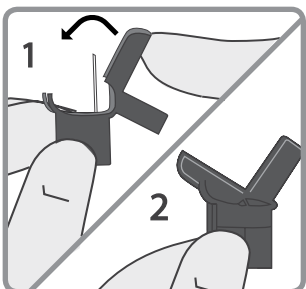


To Insert the Quick-set® Infusion Set:

7. With one hand, place your fingers on the Quick-set. With the other hand, pull the blue hub straight out to remove the insertion needle.



8. Fold the hub handle in half until it locks into place. Dispose into a sharps container.



To Prime the Cannula:

1. From the **PRIME MENU** select **Fixed Prime** and press **ACT**.

2. If you are using a 6mm cannula, press **▲** to enter 0.3 units of insulin. Press **ACT**.



OR

- Or, if you are using a 9mm cannula, press **▲** to enter 0.5 units of insulin. Press **ACT**.

